

UBE2D1/2/3/4 Polyclonal antibody

Catalog Number: 28328-1-AP

1 Publications

Basic Information

Catalog Number:

28328-1-AP

Size:

800 µg/ml

Source:

Rabbit

Isotype:

IgG

Immunogen Catalog Number:

AG28736

GenBank Accession Number:

BC033349

GeneID (NCBI):

7322

UNIPROT ID:

P62837

Full Name:

ubiquitin-conjugating enzyme E2D 2
(UBC4/5 homolog, yeast)

Calculated MW:

17 kDa

Observed MW:

14-17 kDa

Purification Method:

Antigen affinity purification

Recommended Dilutions:

WB 1:500-1:2000

IHC 1:250-1:1000

Applications

Tested Applications:

IHC, WB, ELISA

Cited Applications:

WB

Species Specificity:

Human, Mouse, Rat

Cited Species:

mouse

Note-IHC: suggested antigen retrieval with TE buffer pH 9.0; (*) Alternatively, antigen retrieval may be performed with citrate buffer pH 6.0

Positive Controls:

WB: HEK-293 cells, MCF-7 cells, NIH/3T3 cells, mouse testis tissue, mouse kidney tissue, rat kidney tissue, PC-12 cells

IHC: human breast cancer tissue,

Background Information

Ubiquitination is a post-translational modification pathway or is part of the specific protein-degradation pathway by the 26S proteasome. Ubiquitination of a target protein involves multistep enzymatic reaction catalyzed by a cascade of enzymes including Ub-activating enzymes (E1s), Ub-conjugating enzymes (E2s) and Ub ligases (E3s) (PMID: 23542885). UBE2D family, which has 4 members named as UBE2D1/2/3/4, is an E2 ubiquitin-conjugating enzyme family in the ubiquitin-proteasome system. This antibody can recognize all the four members of UBE2D due to the high homology.

Notable Publications

Author	Pubmed ID	Journal	Application
Cheng-Jie Zhou	36513638	Nat Commun	WB

Storage

Storage:

Store at -20°C. Stable for one year after shipment.

Storage Buffer:

PBS with 0.02% sodium azide and 50% glycerol pH 7.3.

Aliquoting is unnecessary for -20°C storage

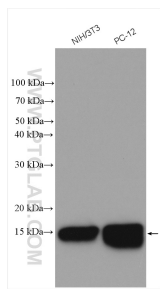
For technical support and original validation data for this product please contact:

T: 4006900926

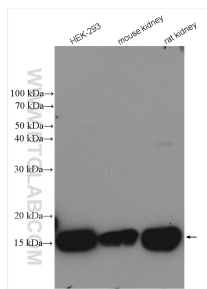
E: Proteintech-CN@ptglab.comW: ptgcn.com

This product is exclusively available under Proteintech Group brand and is not available to purchase from any other manufacturer.

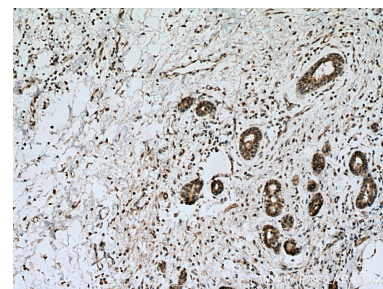
Selected Validation Data



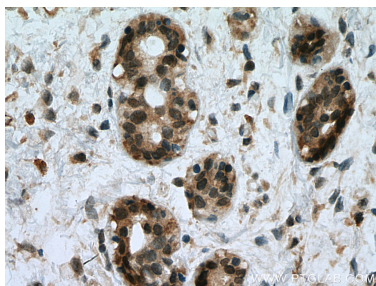
Various lysates were subjected to SDS PAGE followed by western blot with 28328-1-AP (UBE2D1/2/3/4 antibody) at dilution of 1:1000 incubated at room temperature for 1.5 hours.



Various lysates were subjected to SDS PAGE followed by western blot with 28328-1-AP (UBE2D1/2/3/4 antibody) at dilution of 1:1000 incubated at room temperature for 1.5 hours.



Immunohistochemical analysis of paraffin-embedded human breast cancer tissue slide using 28328-1-AP (UBE2D1/2/3/4 antibody) at dilution of 1:500 (under 10x lens). Heat mediated antigen retrieval with Tris-EDTA buffer (pH 9.0).



Immunohistochemical analysis of paraffin-embedded human breast cancer tissue slide using 28328-1-AP (UBE2D1/2/3/4 antibody) at dilution of 1:500 (under 40x lens). Heat mediated antigen retrieval with Tris-EDTA buffer (pH 9.0).