

For Research Use Only

ADRB1 Polyclonal antibody

Catalog Number: 28323-1-AP

4 Publications



Basic Information

Catalog Number:

28323-1-AP

Concentration:

650 ug/ml

Source:

Rabbit

Isotype:

IgG

Immunogen Catalog Number:

AG28223

GenBank Accession Number:

NM_000684

GeneID (NCBI):

153

UNIPROT ID:

P08588

Full Name:

adrenergic, beta-1-, receptor

Calculated MW:

51 kDa

Observed MW:

49 kDa

Purification Method:

Antigen affinity purification

Recommended Dilutions:

WB 1:1000-1:4000

IHC 1:50-1:500

Applications

Tested Applications:

WB, IHC, ELISA

Cited Applications:

WB, IHC

Species Specificity:

human, mouse, rat

Cited Species:

human, mouse, rat

Note-IHC: suggested antigen retrieval with TE buffer pH 9.0; (*) Alternatively, antigen retrieval may be performed with citrate buffer pH 6.0

Positive Controls:

WB : mouse heart tissue, rat heart tissue

IHC : mouse lung tissue,

Background Information

ADRB1 (adrenergic receptor beta 1), a member of the G protein-coupled receptor (GPCR) superfamily, responds to catecholamine stimulation. ADRB1 is the predominant subtype expressed in the heart and mediates increases in inotropy and chronotropy when stimulated. ADRB1 mediates a wide range of cardiovascular physiological responses and has been of great interest to researchers as a therapeutic target for cardiovascular diseases. Moreover, three subtypes of ADRBs (ADRB1, ADRB2, and ADRB3) are encoded by three separate genes (PMID:16636683; 33372534; 33593484).

Notable Publications

Author	Pubmed ID	Journal	Application
Leyi Zhang	39630109	Adv Sci (Weinh)	IHC
Xingcheng Lin	37927415	Oncol Lett	WB
Wanyu Tu	37783262	Brain Res	WB

Storage

Storage:

Store at -20°C. Stable for one year after shipment.

Storage Buffer:

PBS with 0.02% sodium azide and 50% glycerol pH 7.3.

Aliquoting is unnecessary for -20°C storage

For technical support and original validation data for this product please contact:

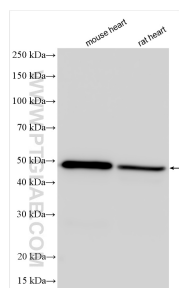
T: 4006900926

E: Proteintech-CN@ptglab.com

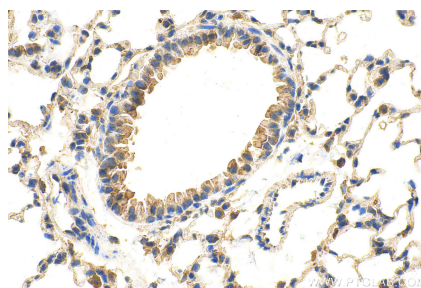
W: ptgcn.com

This product is exclusively available under Proteintech Group brand and is not available to purchase from any other manufacturer.

Selected Validation Data



Various lysates were subjected to SDS PAGE followed by western blot with 28323-1-AP (ADRB1 antibody) at dilution of 1:2000 incubated at room temperature for 1.5 hours.



Immunohistochemical analysis of paraffin-embedded mouse lung tissue slide using 28323-1-AP (ADRB1 antibody) at dilution of 1:200 (under 40x lens). Heat mediated antigen retrieval with Tris-EDTA buffer (pH 9.0).