

For Research Use Only



Phospho-DLK/MAP3K12 (Thr43) Polyclonal antibody

Catalog Number: 28277-1-AP

1 Publications

Basic Information

Catalog Number:

28277-1-AP

Size:

300 µg/ml

Source:

Rabbit

Isotype:

IgG

GenBank Accession Number:

NM_001193511

GeneID (NCBI):

7786

UNIPROT ID:

Q12852

Full Name:

mitogen-activated protein kinase
kinase kinase 12

Calculated MW:

93 kda

Observed MW:

93 kDa

Purification Method:

Antigen affinity purification

Recommended Dilutions:

WB 1:500-1:1000

Applications

Tested Applications:

WB, ELISA

Cited Applications:

WB

Species Specificity:

Human

Cited Species:

human

Positive Controls:

WB : PDGF treated PC-3 cells,

Background Information

MAP3K12, also named as DLK ((dual leucine zipper kinase), is a part of a non-canonical MAPK signaling pathway. It has been reported that MAP3K12 can be activated by APOE through a receptor-mediated mechanism. MAP3K12 enhances the AP-1-mediated transcription of APP via a MAP kinase signal transduction pathway composed of MAP2K7, MAPK1/ERK2 and MAPK3/ERK1. MAP3K12 is required for pancreatic beta-cell proliferation during postnatal development and stress-induced JNK signaling in neurons.(PMID: 28111074, 25341110, 32189007)

Notable Publications

Author	Pubmed ID	Journal	Application
Xinyi Zheng	39038636	Eur J Pharmacol	WB

Storage

Storage:

Store at -20°C. Stable for one year after shipment.

Storage Buffer:

PBS with 0.02% sodium azide and 50% glycerol pH 7.3.

Aliquoting is unnecessary for -20°C storage

For technical support and original validation data for this product please contact:

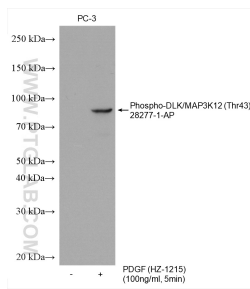
T: 4006900926

E: Proteintech-CN@ptglab.com

W: ptgcn.com

This product is exclusively available under Proteintech Group brand and is not available to purchase from any other manufacturer.

Selected Validation Data



Non-treated PC-3 and PDGF (HZ-1215) treated PC-3 cells were subjected to SDS PAGE followed by western blot with 28277-1-AP (Phospho-DLK (Thr43) antibody) at dilution of 1:600 incubated at 4°C overnight.