

For Research Use Only

CTC1 Polyclonal antibody, PBS Only

Catalog Number: 28268-1-PBS

Featured Product



Basic Information

Catalog Number:

28268-1-PBS

Concentration:

1 mg/ml

Source:

Rabbit

Isotype:

IgG

Immunogen Catalog Number:

AG28167

GenBank Accession Number:

BC111783

GeneID (NCBI):

80169

UNIPROT ID:

Q2NKJ3

Full Name:

chromosome 17 open reading frame

68

Calculated MW:

1217 aa, 135 kDa

Observed MW:

135-150 kDa

Purification Method:

Antigen affinity purification

Applications

Tested Applications:

WB, IF-P, Indirect ELISA

Species Specificity:

human

Background Information

Conserved telomere maintenance component 1 (CTC1) is a subunit of an alpha accessory factor (AAF) that stimulates the activity of DNA polymerase-alpha-primase, the enzyme that initiates DNA replication (PMID: 19119139). CTC1 also functions in a telomere-associated complex with STN1 and TEN1 (PMID: 19854130).

Storage

Storage:

Store at -80°C.

The product is shipped with ice packs. Upon receipt, store it immediately at -80°C

Storage Buffer:

PBS only, pH7.3

For technical support and original validation data for this product please contact:

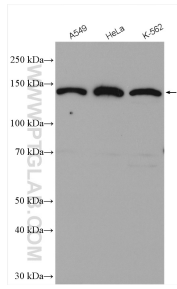
T: 4006900926

E: Proteintech-CN@ptglab.com

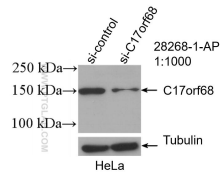
W: ptgcn.com

This product is exclusively available under Proteintech Group brand and is not available to purchase from any other manufacturer.

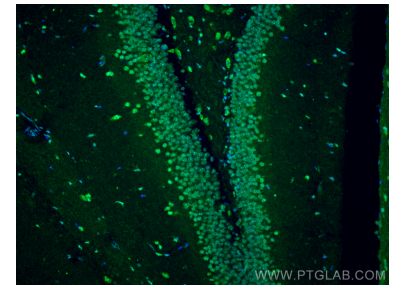
Selected Validation Data



Various lysates were subjected to SDS PAGE followed by western blot with 28268-1-AP (C17orf68 antibody) at dilution of 1:1500 incubated at room temperature for 1.5 hours. This data was developed using the same antibody clone with 28268-1-PBS in a different storage buffer formulation.



WB result of C17orf68 antibody (28268-1-AP; 1:1000; incubated at room temperature for 1.5 hours) with sh-Control and sh-C17orf68 transfected HeLa cells. This data was developed using the same antibody clone with 28268-1-PBS in a different storage buffer formulation.



Immunofluorescent analysis of (4% PFA) fixed paraffin-embedded mouse brain tissue using CTC1 antibody (28268-1-AP) at dilution of 1:200 and CoraLite®488-Conjugated Goat Anti-Rabbit IgG(H+L) (SA00013-2). Heat mediated antigen retrieval with Tris-EDTA buffer (pH 9.0). This data was developed using the same antibody clone with 28268-1-PBS in a different storage buffer formulation.