

For Research Use Only

# CREG2 Polyclonal antibody, PBS Only

Catalog Number: 28236-1-PBS



## Basic Information

Catalog Number:

28236-1-PBS

Source:

Rabbit

Isotype:

IgG

Immunogen Catalog Number:

AG28242

GenBank Accession Number:

BC032949

GeneID (NCBI):

200407

UNIPROT ID:

Q8IUH2

Full Name:

cellular repressor of E1A-stimulated genes 2

Calculated MW:

32 kDa

Purification Method:

Antigen affinity purification

## Applications

Tested Applications:

IHC, IF/ICC, Indirect ELISA

Species Specificity:

human, mouse

## Background Information

The cellular repressor of E1A-stimulated genes (CREG) is a secreted glycoprotein that promotes the differentiation of pluripotent stem cells. CREG2 is a promising biological indicator because it plays an important role in increasing the migratory and proliferative capacity of lung adenocarcinoma (LUAD) cells (PMID: 40676398).

## Storage

Storage:

Store at -80°C.

**The product is shipped with ice packs. Upon receipt, store it immediately at -80°C**

Storage Buffer:

PBS only, pH7.3

For technical support and original validation data for this product please contact:

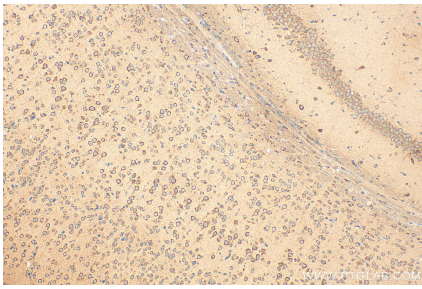
T: 4006900926

E: [Proteintech-CN@ptglab.com](mailto:Proteintech-CN@ptglab.com)

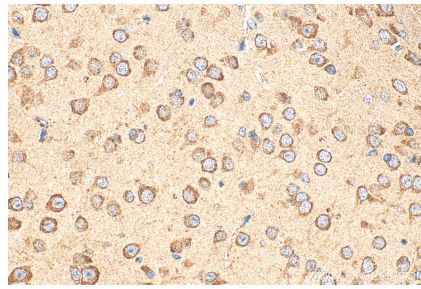
W: [ptgcn.com](http://ptgcn.com)

**This product is exclusively available under Proteintech Group brand and is not available to purchase from any other manufacturer.**

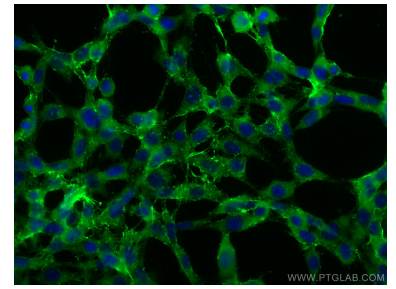
## Selected Validation Data



Immunohistochemical analysis of paraffin-embedded mouse brain tissue slide using 28236-1-AP (CREG2 antibody) at dilution of 1:200 (under 10x lens). Heat mediated antigen retrieval with Tris-EDTA buffer (pH 9.0). This data was developed using the same antibody clone with 28236-1-PBS in a different storage buffer formulation.



Immunohistochemical analysis of paraffin-embedded mouse brain tissue slide using 28236-1-AP (CREG2 antibody) at dilution of 1:200 (under 40x lens). Heat mediated antigen retrieval with Tris-EDTA buffer (pH 9.0). This data was developed using the same antibody clone with 28236-1-PBS in a different storage buffer formulation.



Immunofluorescent analysis of (-20°C Ethanol) fixed NIH/3T3 cells using CREG2 antibody (28236-1-AP) at dilution of 1:400 and CoraLite@488-Conjugated AffiniPure Goat Anti-Rabbit IgG(H+L). This data was developed using the same antibody clone with 28236-1-PBS in a different storage buffer formulation.