

For Research Use Only

# CREG2 Polyclonal antibody

Catalog Number: 28236-1-AP



## Basic Information

<b>Catalog Number:</b> 28236-1-AP	<b>GenBank Accession Number:</b> BC032949	<b>Purification Method:</b> Antigen affinity purification
<b>Source:</b> Rabbit	<b>GeneID (NCBI):</b> 200407	<b>Recommended Dilutions:</b> IHC: 1:50-1:500 IF/ICC: 1:200-1:800
<b>Isotype:</b> IgG	<b>UNIPROT ID:</b> Q8IUH2	
<b>Immunogen Catalog Number:</b> AG28242	<b>Full Name:</b> cellular repressor of E1A-stimulated genes 2	
	<b>Calculated MW:</b> 32 kDa	

## Applications

<b>Tested Applications:</b> IHC, IF/ICC, ELISA	<b>Positive Controls:</b> IHC : mouse brain tissue, IF/ICC : NIH/3T3 cells,
<b>Species Specificity:</b> human, mouse	
<b>Note-IHC: suggested antigen retrieval with TE buffer pH 9.0; (*) Alternatively, antigen retrieval may be performed with citrate buffer pH 6.0</b>	

## Background Information

The cellular repressor of E1A-stimulated genes (CREG) is a secreted glycoprotein that promotes the differentiation of pluripotent stem cells. CREG2 is a promising biological indicator because it plays an important role in increasing the migratory and proliferative capacity of lung adenocarcinoma (LUAD) cells (PMID: 40676398).

## Storage

**Storage:**  
Store at -20°C. Stable for one year after shipment.  
**Storage Buffer:**  
PBS with 0.02% sodium azide and 50% glycerol, pH7.3  
Aliquoting is unnecessary for -20°C storage

For technical support and original validation data for this product please contact:

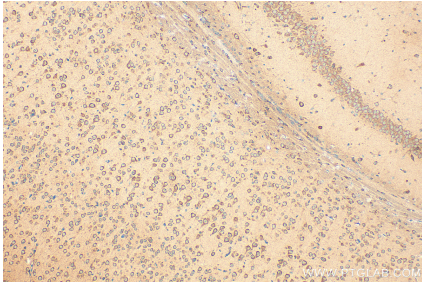
T: 4006900926

E: Proteintech-CN@ptglab.com

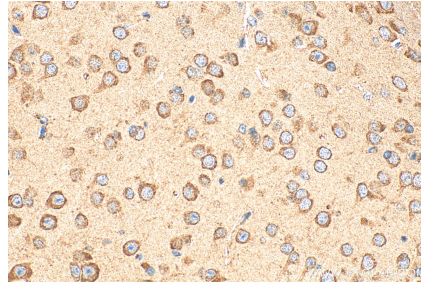
W: ptgcn.com

**This product is exclusively available under Proteintech Group brand and is not available to purchase from any other manufacturer.**

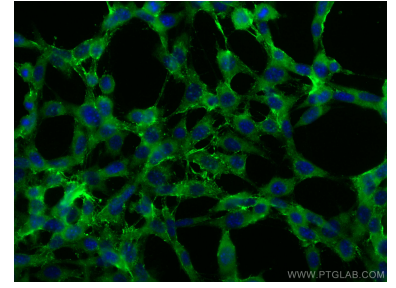
## Selected Validation Data



Immunohistochemical analysis of paraffin-embedded mouse brain tissue slide using 28236-1-AP (CREG2 antibody) at dilution of 1:200 (under 10x lens). Heat mediated antigen retrieval with Tris-EDTA buffer (pH 9.0).



Immunohistochemical analysis of paraffin-embedded mouse brain tissue slide using 28236-1-AP (CREG2 antibody) at dilution of 1:200 (under 40x lens). Heat mediated antigen retrieval with Tris-EDTA buffer (pH 9.0).



Immunofluorescent analysis of (-20°C Ethanol) fixed NIH/3T3 cells using CREG2 antibody (28236-1-AP) at dilution of 1:400 and CoraLite@488-Conjugated AffiniPure Goat Anti-Rabbit IgG(H+L).