

For Research Use Only

GPR4 Polyclonal antibody, PBS Only

Catalog Number: 28232-1-PBS



Basic Information

Catalog Number:

28232-1-PBS

Concentration:

1 mg/ml

Source:

Rabbit

Isotype:

IgG

Immunogen Catalog Number:

AG28273

GenBank Accession Number:

BC067535

GeneID (NCBI):

2828

UNIPROT ID:

P46093

Full Name:

G protein-coupled receptor 4

Calculated MW:

362 aa, 41 kDa

Purification Method:

Antigen affinity purification

Applications

Tested Applications:

IHC, Indirect ELISA

Species Specificity:

human, mouse

Background Information

GPR4 (G-protein-coupled receptor 4) is a proton-sensing G-protein-coupled receptor (GPCR) that contributes to neovascularization in acidic microenvironments (PMID: 33632325). GPR4 is highly expressed in vascular endothelial cells (ECs) and blood vessel-rich tissues such as the lung, kidney, heart, and liver. Moreover, GPR4 has been shown to mediate EC inflammatory responses to acidosis and is central for leukocyte-endothelium interaction (PMID: 27940273).

Storage

Storage:

Store at -80°C.

The product is shipped with ice packs. Upon receipt, store it immediately at -80°C

Storage Buffer:

PBS only, pH7.3

For technical support and original validation data for this product please contact:

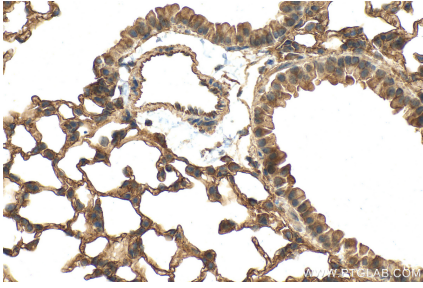
T: 4006900926

E: Proteintech-CN@ptglab.com

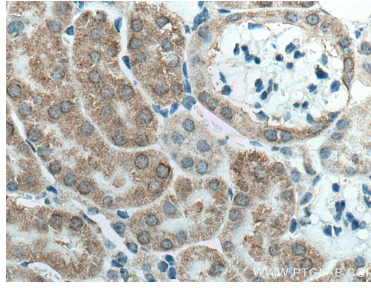
W: ptgcn.com

This product is exclusively available under Proteintech Group brand and is not available to purchase from any other manufacturer.

Selected Validation Data



Immunohistochemical analysis of paraffin-embedded mouse lung tissue slide using 28232-1-AP (GPR4 antibody) at dilution of 1:200 (under 40x lens). Heat mediated antigen retrieval with Tris-EDTA buffer (pH 9.0). This data was developed using the same antibody clone with 28232-1-PBS in a different storage buffer formulation.



Immunohistochemical analysis of paraffin-embedded mouse kidney tissue slide using 28232-1-AP (GPR4 antibody) at dilution of 1:200 (under 40x lens). Heat mediated antigen retrieval with Tris-EDTA buffer (pH 9.0). This data was developed using the same antibody clone with 28232-1-PBS in a different storage buffer formulation.