

For Research Use Only

# RGS22 Polyclonal antibody, PBS Only

Catalog Number: 28231-1-PBS



## Basic Information

<b>Catalog Number:</b> 28231-1-PBS	<b>GenBank Accession Number:</b> BC092411	<b>Purification Method:</b> Antigen affinity purification
<b>Source:</b> Rabbit	<b>GeneID (NCBI):</b> 26166	
<b>Isotype:</b> IgG	<b>UNIPROT ID:</b> Q8NE09	
<b>Immunogen Catalog Number:</b> AG28156	<b>Full Name:</b> regulator of G-protein signaling 22	
	<b>Calculated MW:</b> 1263 aa, 147 kDa	

## Applications

**Tested Applications:**  
IHC, Indirect ELISA

**Species Specificity:**  
human, mouse

## Background Information

The RGS22 protein (Regulator of G-protein signaling 22) belongs to the regulators of G-protein signaling (RGS) protein family and is a member of the RA/RGS subfamily. Its protein structure contains at least three conserved RGS domains. RGS22 primarily functions as a GTPase-activating protein (GAP) by binding to the G protein  $\alpha$  subunit and enhancing its GTPase activity, thereby promoting the conversion of G proteins from an active state to an inactive state, which negatively regulates downstream signal transduction of G protein-coupled receptors.

## Storage

**Storage:**  
Store at  $-80^{\circ}\text{C}$ .  
**The product is shipped with ice packs. Upon receipt, store it immediately at  $-80^{\circ}\text{C}$**

**Storage Buffer:**  
PBS only, pH7.3

For technical support and original validation data for this product please contact:

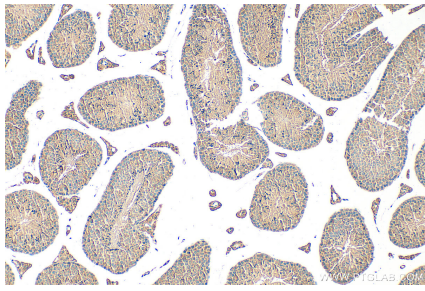
T: 4006900926

E: [Proteintech-CN@ptglab.com](mailto:Proteintech-CN@ptglab.com)

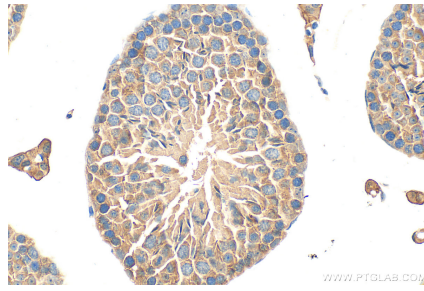
W: [ptgcn.com](http://ptgcn.com)

**This product is exclusively available under Proteintech Group brand and is not available to purchase from any other manufacturer.**

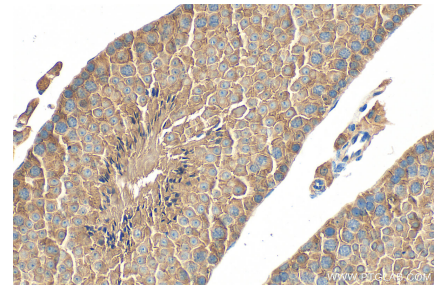
## Selected Validation Data



Immunohistochemical analysis of paraffin-embedded mouse testis tissue slide using 28231-1-AP (RGS22 antibody) at dilution of 1:200 (under 10x lens). Heat mediated antigen retrieval with Tris-EDTA buffer (pH 9.0). This data was developed using the same antibody clone with 28231-1-PBS in a different storage buffer formulation.



Immunohistochemical analysis of paraffin-embedded mouse testis tissue slide using 28231-1-AP (RGS22 antibody) at dilution of 1:200 (under 40x lens). Heat mediated antigen retrieval with Tris-EDTA buffer (pH 9.0). This data was developed using the same antibody clone with 28231-1-PBS in a different storage buffer formulation.



Immunohistochemical analysis of paraffin-embedded mouse testis tissue slide using 28231-1-AP (RGS22 antibody) at dilution of 1:200 (under 40x lens). Heat mediated antigen retrieval with Tris-EDTA buffer (pH 9.0). This data was developed using the same antibody clone with 28231-1-PBS in a different storage buffer formulation.