

For Research Use Only

ASK1 Polyclonal antibody

Catalog Number: 28201-1-AP

24 Publications



Basic Information

Catalog Number:

28201-1-AP

Size:

700 µg/ml

Source:

Rabbit

Isotype:

IgG

Immunogen Catalog Number:

AG28092

GenBank Accession Number:

BC054503

GeneID (NCBI):

4217

UNIPROT ID:

Q99683

Full Name:

mitogen-activated protein kinase

kinase kinase 5

Calculated MW:

155 kDa

Observed MW:

155 kDa

Purification Method:

Antigen affinity purification

Recommended Dilutions:

WB 1:500-1:2000

IHC 1:200-1:800

Applications

Tested Applications:

WB, IHC, ELISA

Cited Applications:

WB, IP

Species Specificity:

Human, Mouse

Cited Species:

human, mouse, rat

Positive Controls:

WB : HEK-293 cells, HeLa cells, A431 cells, BxPC-3 cells

IHC : human pancreas cancer tissue, mouse heart tissue

Note-IHC: suggested antigen retrieval with TE buffer pH 9.0; (*) Alternatively, antigen retrieval may be performed with citrate buffer pH 6.0

Background Information

ASK1 (Apoptosis signal-regulating kinase 1) is also named as MAP3K5, MAPKKK5, MEKK5 and belongs to the MAP kinase kinase kinase subfamily. It is an evolutionarily conserved mitogen activated protein 3-kinase that activates both Jnk and p38 mitogen-activated protein kinases. ASK1 is activated in response to various cytotoxic stresses including TNF, Fas and reactive oxygen species (ROS) such as H₂O₂, and activates c-Jun NH 2-terminal kinase (JNK) and p38. 28201-1-AP antibody detects the 155 kDa band in SDS-PAGE.

Notable Publications

Author	Pubmed ID	Journal	Application
Yunfei Geng	34678374	Toxicol Appl Pharmacol	WB
Yong Zhang	34734480	J Cell Mol Med	WB
Ting Wu	31202841	Life Sci	WB

Storage

Storage:

Store at -20°C. Stable for one year after shipment.

Storage Buffer:

PBS with 0.02% sodium azide and 50% glycerol pH 7.3.

Aliquoting is unnecessary for -20°C storage

For technical support and original validation data for this product please contact:

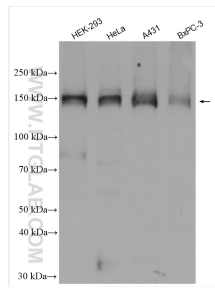
T: 4006900926

E: Proteintech-CN@ptglab.com

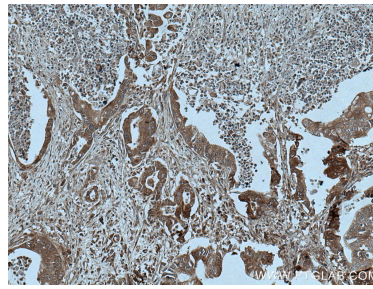
W: ptgcn.com

This product is exclusively available under Proteintech Group brand and is not available to purchase from any other manufacturer.

Selected Validation Data



Various lysates were subjected to SDS PAGE followed by western blot with 28201-1-AP (ASK1 antibody) at dilution of 1:1000 incubated at room temperature for 1.5 hours.



Immunohistochemical analysis of paraffin-embedded human pancreas cancer tissue slide using 28201-1-AP (ASK1 antibody) at dilution of 1:400 (under 10x lens. Heat mediated antigen retrieval with Tris-EDTA buffer (pH 9.0).