

WBSCR22 Polyclonal antibody

Catalog Number: 28192-1-AP

Featured Product

1 Publications

Basic Information

Catalog Number:

28192-1-AP

Size:

700 µg/ml

Source:

Rabbit

Isotype:

IgG

Immunogen Catalog Number:

AG28094

GenBank Accession Number:

BC000169

GeneID (NCBI):

114049

UNIPROT ID:

O43709

Full Name:

Williams Beuren syndrome

chromosome region 22

Calculated MW:

32 kDa

Observed MW:

32 kDa

Purification Method:

Antigen affinity purification

Recommended Dilutions:

WB 1:1000-1:6000

IHC 1:50-1:500

Applications

Tested Applications:

WB, IHC, ELISA

Cited Applications:

WB, IF

Species Specificity:

Human, Mouse

Cited Species:

human

Positive Controls:

WB : HEK-293 cells, HeLa cells, HepG2 cells

IHC : human colon cancer tissue,

Note-IHC: suggested antigen retrieval with TE buffer pH 9.0; (*) Alternatively, antigen retrieval may be performed with citrate buffer pH 6.0

Background Information

WBSCR22 (Williams-Beuren syndrome chromosomal region 22 protein), also known as BUD23, MERM1, is affected in Williams-Beuren syndrome and has been implicated in tumorigenesis and metastasis formation. WBSCR22 contains a nuclear localization signal and a common S-adenosyl-L-methionine binding motif that is evolutionarily conserved in methyltransferases (PMID: 29133897, 25525153). WBSCR22 protein is expressed at a high level in invasive breast cancer and its ectopic expression enhances tumor cell survival in the vasculature (PMID: 24086612).

Notable Publications

Author	Pubmed ID	Journal	Application
Lenka Stixová	38370261	Heliyon	IF, WB

Storage

Storage:

Store at -20°C. Stable for one year after shipment.

Storage Buffer:

PBS with 0.02% sodium azide and 50% glycerol pH 7.3.

Aliquoting is unnecessary for -20°C storage

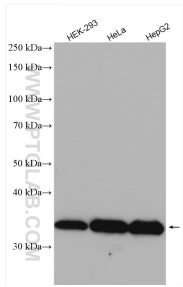
For technical support and original validation data for this product please contact:

T: 4006900926

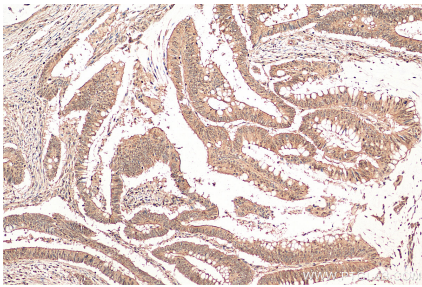
E: Proteintech-CN@ptglab.comW: ptgcn.com

This product is exclusively available under Proteintech Group brand and is not available to purchase from any other manufacturer.

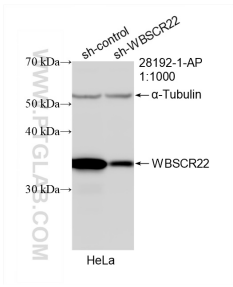
Selected Validation Data



Various lysates were subjected to SDS PAGE followed by western blot with 28192-1-AP (WBSCR22 antibody) at dilution of 1:3000 incubated at room temperature for 1.5 hours.



Immunohistochemical analysis of paraffin-embedded human colon cancer tissue slide using 28192-1-AP (WBSCR22 antibody) at dilution of 1:200 (under 10x lens). Heat mediated antigen retrieval with Tris-EDTA buffer (pH 9.0).



WB result of WBSCR22 antibody (28192-1-AP; 1:1000; incubated at room temperature for 1.5 hours) with sh-Control and sh-WBSCR22 transfected HeLa cells.