

For Research Use Only

# PMS1 Polyclonal antibody

Catalog Number: 28186-1-AP

Featured Product



## Basic Information

**Catalog Number:**

28186-1-AP

**Source:**

Rabbit

**Isotype:**

IgG

**Immunogen Catalog Number:**

AG28132

**GenBank Accession Number:**

BC096331

**GeneID (NCBI):**

5378

**UNIPROT ID:**

P54277

**Full Name:**

PMS1 postmeiotic segregation increased 1 (S. cerevisiae)

**Observed MW:**

106 kDa

**Purification Method:**

Antigen affinity purification

**Recommended Dilutions:**

WB: 1:1000-1:6000

IP: 0.5-4.0 ug for 1.0-3.0 mg of total protein lysate

IF/ICC: 1:50-1:500

## Applications

**Tested Applications:**

WB, IF/ICC, IP, ELISA

**Species Specificity:**

human

**Positive Controls:**

**WB:** Jurkat cells, HepG2 cells, HeLa cells, K-562 cells, MOLT-4 cells

**IP:** Jurkat cells,

**IF/ICC:** Caco-2 cells,

## Background Information

PMS1 Homolog 1 is a member of the DNA mismatch repair enzymes (MMREs) which is to eliminate the mismatch of insertions and deletions as a consequence of DNA polymerase errors at DNA synthesis in eukaryotes. PMS1 and MLH1 could form a heterodimer MutL $\beta$  that belongs to MMREs (PMID:25619773). In the MMR system, the MutS complex recognizes the DNA mispairs firstly, and then the Mlh1-Pms1 and other associated proteins such as PCNA, RFC, Exo1 were recruited, inducing Exonuclease 1 (Exo1)-dependent and -independent MMR pathways (PMID:24981171). Mutations in this gene cause hereditary nonpolyposis colorectal cancer (HNPCC), which is also known as Lynch syndrome. It was reported that PMS1 is a widely expressed protein and located in the nucleus. Alternative splicing allows for 4 isoforms of PMS1 protein.

## Storage

**Storage:**

Store at -20°C. Stable for one year after shipment.

**Storage Buffer:**

PBS with 0.02% sodium azide and 50% glycerol, pH7.3

Aliquoting is unnecessary for -20°C storage

For technical support and original validation data for this product please contact:

T: 4006900926

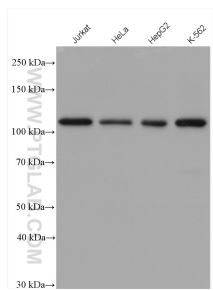
E: [Proteintech-CN@ptglab.com](mailto:Proteintech-CN@ptglab.com)

W: [ptgcn.com](http://ptgcn.com)

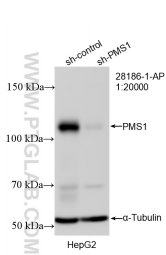
This product is exclusively available under Proteintech Group brand and is not available to purchase from any other manufacturer.



Selected Validation Data



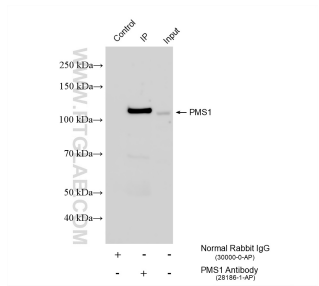
Various lysates were subjected to SDS PAGE followed by western blot with 28186-1-AP (PMS1 antibody) at dilution of 1:3000 incubated at room temperature for 1.5 hours.



WB result of PMS1 antibody (28186-1-AP; 1:20000; incubated at room temperature for 1.5 hours) with sh-Control and sh-PMS1 transfected HepG2 cells.



Immunofluorescent analysis of (4% PFA) fixed Caco-2 cells using PMS1 antibody (28186-1-AP) at dilution of 1:200 and CoraLite®488-Conjugated AffiniPure Goat Anti-Rabbit IgG(H+L).



IP result of anti-PMS1 (IP:28186-1-AP, 4ug; Detection:28186-1-AP 1:3000) with Jurkat cells lysate 900 ug.