

For Research Use Only

IRE1/ERN1 Polyclonal antibody, PBS Only

Catalog Number: 28164-1-PBS



Basic Information

Catalog Number:

28164-1-PBS

Concentration:

1 mg/ml

Source:

Rabbit

Isotype:

IgG

Immunogen Catalog Number:

AG27375

GenBank Accession Number:

BC130405

GeneID (NCBI):

2081

UNIPROT ID:

O75460

Full Name:

endoplasmic reticulum to nucleus
signaling 1

Calculated MW:

977 aa, 110 kDa

Observed MW:

130 kDa

Purification Method:

Antigen affinity purification

Applications

Tested Applications:

WB, Indirect ELISA

Species Specificity:

human

Background Information

Inositol-requiring enzyme 1 (IRE1) is an ER transmembrane sensor that activates the UPR to maintain the ER and cellular function. Although mammalian IRE1 promotes cell survival, it can initiate apoptosis via decay of antiapoptotic miRNAs. IRE1 contains a ribonuclease domain in its cytoplasmic region which initiates splicing reaction by direct cleavage of XBP1 mRNA at the two stem loop structures. IRE1 plays instrumental protumoral roles in several cancers, and high IRE1 activity has been associated with poorer prognoses. (PMID: 23880584, PMID: 32861679, PMID: 31875595)

Storage

Storage:

Store at -80°C.

The product is shipped with ice packs. Upon receipt, store it immediately at -80°C

Storage Buffer:

PBS only, pH7.3

For technical support and original validation data for this product please contact:

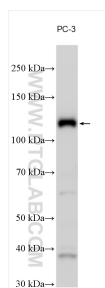
T: 4006900926

E: Proteintech-CN@ptglab.com

W: ptgcn.com

This product is exclusively available under Proteintech Group brand and is not available to purchase from any other manufacturer.

Selected Validation Data



PC-3 cells were subjected to SDS PAGE followed by western blot with 28164-1-AP (IRE1; ERN1 antibody) at dilution of 1:2000 incubated at room temperature for 1.5 hours. This data was developed using the same antibody clone with 28164-1-PBS in a different storage buffer formulation.