

For Research Use Only

RASEF Polyclonal antibody

Catalog Number: 28162-1-AP



Basic Information

Catalog Number: 28162-1-AP	GenBank Accession Number: BC023566	Purification Method: Antigen affinity purification
Size: 900 ug/ml	GeneID (NCBI): 158158	Recommended Dilutions: WB 1:1000-1:3000 IHC 1:200-1:800
Source: Rabbit	UNIPROT ID: Q8IZ41	
Isotype: IgG	Full Name: RAS and EF-hand domain containing	
Immunogen Catalog Number: AG28049	Calculated MW: 740 aa, 83 kDa Observed MW: 90-100 kDa	

Applications

Tested Applications: WB, IHC, ELISA	Positive Controls:
Species Specificity: human, rat	WB : LNCaP cells, PC-12 cells
Note-IHC: suggested antigen retrieval with TE buffer pH 9.0; (*) Alternatively, antigen retrieval may be performed with citrate buffer pH 6.0	IHC : human stomach tissue, human intrahepatic cholangiocarcinoma tissue

Background Information

RASEF, or RAS and EF-hand domain-containing protein, is a member of the Rab GTPase protein family. RASEF is a protein with significant implications in lung cancer, potentially serving as both a prognostic biomarker and a therapeutic target. Its role in cancer cell growth and its interaction with ERK1/2 signaling make it a promising candidate for further research and development of new molecular therapies in lung cancer treatment.

Storage

Storage:
Store at -20°C. Stable for one year after shipment.
Storage Buffer:
PBS with 0.02% sodium azide and 50% glycerol pH 7.3.
Aliquoting is unnecessary for -20°C storage

For technical support and original validation data for this product please contact:

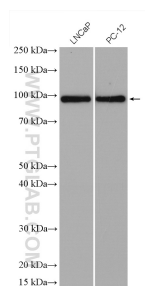
T: 4006900926

E: Proteintech-CN@ptglab.com

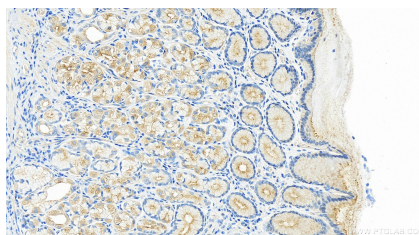
W: ptgcn.com

This product is exclusively available under Proteintech Group brand and is not available to purchase from any other manufacturer.

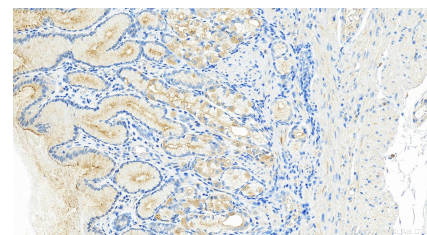
Selected Validation Data



Various lysates were subjected to SDS PAGE followed by western blot with 28162-1-AP (RASEF antibody) at dilution of 1:2000 incubated at room temperature for 1.5 hours.



Immunohistochemical analysis of paraffin-embedded human stomach tissue slide using 28162-1-AP (RASEF antibody) at dilution of 1:400 (under 20x lens). Heat mediated antigen retrieval with Tris-EDTA buffer (pH 9.0).



Immunohistochemical analysis of paraffin-embedded human stomach tissue slide using 28162-1-AP (RASEF antibody) at dilution of 1:400 (under 20x lens). Heat mediated antigen retrieval with Tris-EDTA buffer (pH 9.0).