

PTPRK Polyclonal antibody

Catalog Number: 28151-1-AP

Basic Information

Catalog Number:

28151-1-AP

Size:

500 µg/ml

Source:

Rabbit

Isotype:

IgG

Immunogen Catalog Number:

AG27765

GenBank Accession Number:

BC140775

GeneID (NCBI):

5796

UNIPROT ID:

Q15262

Full Name:protein tyrosine phosphatase,
receptor type, K**Calculated MW:**

1439 aa, 162 kDa

Observed MW:

100-120 kDa

Purification Method:

Antigen affinity purification

Recommended Dilutions:

WB 1:500-1:1000

Applications

Tested Applications:

WB, ELISA

Species Specificity:

Human, mouse, rat

Positive Controls:

WB : mouse spleen tissue, rat spleen tissue

Background Information

PTPRK (Protein Tyrosine Phosphatase Receptor Type Kappa), a member of the receptor-type protein tyrosine phosphatase family, is a transmembrane protein that regulates cell-cell contact. PTPRK is a 210 kDa precursor protein and converted by furin to a mature heterodimeric protein composed of a non-covalently attached amino-terminal extracellular subunit (E-subunit, 120 kDa) and carboxyl-terminal transmembrane subunit (P-subunit, 95 kDa) (PMID: 24882578, 16648485). Loss of PTPRK activity has been observed in pancreatic cancer, primary CNS lymphoma and melanoma, and is associated with poor survival of cancer patients, which suggest that PTPRK is a potential tumor suppressor (PMID: 23696788).

Storage

Storage:

Store at -20°C. Stable for one year after shipment.

Storage Buffer:

PBS with 0.02% sodium azide and 50% glycerol pH 7.3.

Aliquoting is unnecessary for -20°C storage

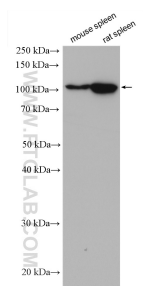
For technical support and original validation data for this product please contact:

T: 4006900926

E: Proteintech-CN@ptglab.comW: ptgcn.com

This product is exclusively available under Proteintech Group brand and is not available to purchase from any other manufacturer.

Selected Validation Data



Various lysates were subjected to SDS PAGE followed by western blot with 28151-1-AP (PTPRK antibody) at dilution of 1:800 incubated at room temperature for 1.5 hours.