

For Research Use Only

DOT1L Polyclonal antibody, PBS Only

Catalog Number: 28145-1-PBS



Basic Information

Catalog Number:

28145-1-PBS

Size:

1 mg/ml

Source:

Rabbit

Isotype:

IgG

Immunogen Catalog Number:

AG27229

GenBank Accession Number:

NM_032482

GeneID (NCBI):

84444

UNIPROT ID:

Q8TEK3

Full Name:

DOT1-like, histone H3 methyltransferase (*S. cerevisiae*)

Calculated MW:

185 kDa

Observed MW:

185-200 kDa

Purification Method:

Antigen affinity purification

Applications

Tested Applications:

WB, Indirect ELISA

Species Specificity:

human, rat

Background Information

DOT1L (Disruptor of telomeric silencing 1-like) is the only known histone methyltransferase catalyzing H3K79 methylation which is an activating mark for gene transcription by promoting transcriptional elongation (PMID: 34187895). DOT1L forms a complex with AF10/AF17 and ENL/AF9, is dysregulated in mixed-lineage leukemia (MLLr), and is believed to regulate transcriptional elongation without direct evidence. DOT1L has been reported to directly interact with RNAPII phosphorylated on Ser2 and/or Ser5 of the C-terminal domain (CTD) of its largest subunit. Loss of Dot1L results in yolk sac angiogenesis defects and embryonic lethality (PMID: 18787701).

Storage

Storage:

Store at -80°C.

The product is shipped with ice packs. Upon receipt, store it immediately at -80°C

Storage Buffer:

PBS Only

For technical support and original validation data for this product please contact:

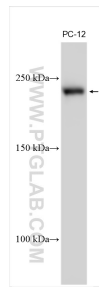
T: 4006900926

E: Proteintech-CN@ptglab.com

W: ptgcn.com

This product is exclusively available under Proteintech Group brand and is not available to purchase from any other manufacturer.

Selected Validation Data



Various lysates were subjected to SDS PAGE followed by western blot with 28145-1-AP (DOT1L antibody) at dilution of 1:3000 incubated at room temperature for 1.5 hours. This data was developed using the same antibody clone with 28145-1-PBS in a different storage buffer formulation.