

For Research Use Only

CDC25B Polyclonal antibody

Catalog Number: 28109-1-AP **1 Publications**



Basic Information

Catalog Number: 28109-1-AP	GenBank Accession Number: BC006395	Purification Method: Antigen affinity purification
Size: 1000 µg/ml	GeneID (NCBI): 994	Recommended Dilutions: WB 1:500-1:2000 IHC 1:50-1:500
Source: Rabbit	UNIPROT ID: P30305	
Isotype: IgG	Full Name: cell division cycle 25 homolog B (S. pombe)	
Immunogen Catalog Number: AG27138	Calculated MW: 65 kDa	
	Observed MW: 60-70 kDa	

Applications

Tested Applications: IHC, WB, ELISA	Positive Controls: WB : HepG2 cells, HeLa cells
Cited Applications: WB, IHC	IHC : human ovary tumor tissue,
Species Specificity: Human	
Cited Species: mouse	

Note-IHC: suggested antigen retrieval with TE buffer pH 9.0; (*) Alternatively, antigen retrieval may be performed with citrate buffer pH 6.0

Background Information

CDC25B, also named as CDC25HU2, belongs to the MPI phosphatase family. It is a tyrosine protein phosphatase which functions as a dosage-dependent inducer of mitotic progression. CDC25B directly dephosphorylates CDK1 and stimulates its kinase activity. The three isoforms seem to have a different level of activity.

Notable Publications

Author	Pubmed ID	Journal	Application
Dexiang Feng	35567596	Cell Biol Toxicol	WB, IHC

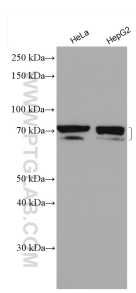
Storage

Storage:
Store at -20°C. Stable for one year after shipment.
Storage Buffer:
PBS with 0.02% sodium azide and 50% glycerol pH 7.3.
Aliquoting is unnecessary for -20°C storage

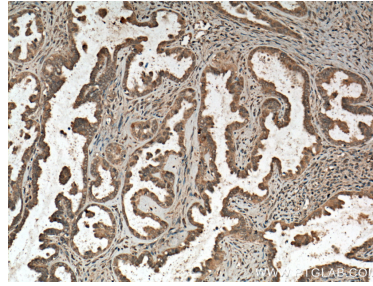
For technical support and original validation data for this product please contact:
T: 4006900926 E: Proteintech-CN@ptglab.com W: ptgcn.com

This product is exclusively available under Proteintech Group brand and is not available to purchase from any other manufacturer.

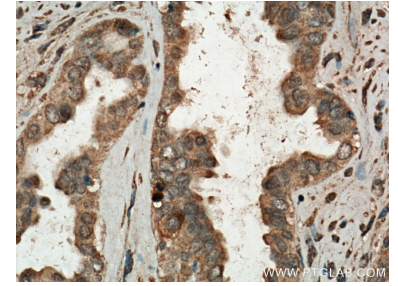
Selected Validation Data



Various lysates were subjected to SDS PAGE followed by western blot with 28109-1-AP (CDC25B antibody) at dilution of 1:1000 incubated at room temperature for 1.5 hours.



Immunohistochemical analysis of paraffin-embedded human ovary tumor tissue slide using 28109-1-AP (CDC25B antibody) at dilution of 1:200 (under 10x lens. Heat mediated antigen retrieval with Tris-EDTA buffer (pH 9.0).



Immunohistochemical analysis of paraffin-embedded human ovary tumor tissue slide using 28109-1-AP (CDC25B antibody) at dilution of 1:200 (under 40x lens. Heat mediated antigen retrieval with Tris-EDTA buffer (pH 9.0).