

For Research Use Only

CUL3 Polyclonal antibody

Catalog Number: 28087-1-AP



Basic Information

Catalog Number: 28087-1-AP	GenBank Accession Number: BC039598	Purification Method: Antigen affinity purification
Size: 500 µg/ml	GeneID (NCBI): 8452	Recommended Dilutions: WB 1:500-1:1000 IHC 1:50-1:500
Source: Rabbit	UNIPROT ID: Q13618	
Isotype: IgG	Full Name: cullin 3	
Immunogen Catalog Number: AG28004	Calculated MW: 89 kDa	
	Observed MW: 80-88 kDa	

Applications

Tested Applications:

IHC, WB, ELISA

Species Specificity:

Human, mouse, rat

Note-IHC: suggested antigen retrieval with TE buffer pH 9.0; (*) Alternatively, antigen retrieval may be performed with citrate buffer pH 6.0

Positive Controls:

WB: mouse testis tissue, human testis tissue, rat testis tissue

IHC: human prostate cancer tissue,

Background Information

Cullin-RING-based BCR (BTB-CUL3-RBX1) E3 ligase are the largest family of ubiquitin ligases which mediate the ubiquitination and subsequent proteasomal degradation of target proteins. One of seven cullin proteins serves as a scaffold protein for the assembly of the multisubunit ubiquitin ligase complex. CUL3 (Cullin-3) ubiquitin ligase complex targets multiple substrate for ubiquitination including cyclin E and of cyclin D1. Defects in CUL3 are the cause of Pseudohypoadosteronism type 2E (PHA2E) characterized by severe hypertension, hyperkalemia, hyperchloremia, hyperchloremic metabolic acidosis, and correction of physiologic abnormalities by thiazide diuretics.

Storage

Storage:

Store at -20°C. Stable for one year after shipment.

Storage Buffer:

PBS with 0.02% sodium azide and 50% glycerol pH 7.3.

Aliquoting is unnecessary for -20°C storage

For technical support and original validation data for this product please contact:

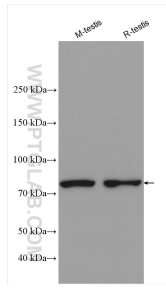
T: 4006900926

E: Proteintech-CN@ptglab.com

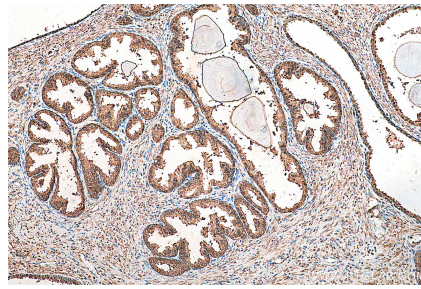
W: ptgcn.com

This product is exclusively available under Proteintech Group brand and is not available to purchase from any other manufacturer.

Selected Validation Data



Various lysates were subjected to SDS PAGE followed by western blot with 28087-1-AP (CUL3 antibody) at dilution of 1:800 incubated at room temperature for 1.5 hours.



Immunohistochemical analysis of paraffin-embedded human prostate cancer tissue slide using 28087-1-AP (CUL3 antibody) at dilution of 1:200 (under 10x lens). Heat mediated antigen retrieval with Tris-EDTA buffer (pH 9.0).