

For Research Use Only

# NPC1L1 Polyclonal antibody

Catalog Number: 28085-1-AP



## Basic Information

<b>Catalog Number:</b> 28085-1-AP	<b>GenBank Accession Number:</b> NM_001101648	<b>Purification Method:</b> Antigen affinity purification
<b>Size:</b> 450 µg/ml	<b>GeneID (NCBI):</b> 29881	<b>Recommended Dilutions:</b> WB 1:500-1:2000 IHC 1:50-1:500
<b>Source:</b> Rabbit	<b>Full Name:</b> NPC1 (Niemann-Pick disease, type C1, gene)-like 1	
<b>Isotype:</b> IgG	<b>Calculated MW:</b> 149 kDa	
<b>Immunogen Catalog Number:</b> AG26277	<b>Observed MW:</b> 140-149 kDa	

## Applications

<b>Tested Applications:</b> IHC, WB, ELISA	<b>Positive Controls:</b> WB : HeLa cells, HepG2 cells IHC : human liver tissue,
<b>Species Specificity:</b> Human	
<b>Note-IHC: suggested antigen retrieval with TE buffer pH 9.0; (*) Alternatively, antigen retrieval may be performed with citrate buffer pH 6.0</b>	

## Background Information

NPC1 like intracellular cholesterol transporter 1 (NPC1L1) is a multi-pass membrane protein which has 1332 amino acids and containing a conserved N-terminal Niemann-Pick C1 (NPC1) domain and a putative sterol-sensing domain (SSD). It is only found in the tubular membranes of primate hepatocytes and the brush-border membranes of the small intestine of mammals. PC1L1 is a key protein for intestinal absorption of cholesterol and plays an important role in cholesterol balance. Cholesterol contributes to cell proliferation, invasion and latency, and is essential for tumor formation and growth, so NPC1L1 plays a critical role in tumor development and spread (PMID: 36034854).

## Storage

**Storage:**  
Store at -20°C. Stable for one year after shipment.  
**Storage Buffer:**  
PBS with 0.02% sodium azide and 50% glycerol pH 7.3.  
Aliquoting is unnecessary for -20°C storage

For technical support and original validation data for this product please contact:

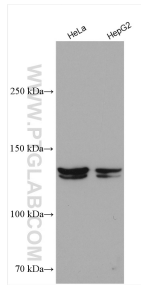
T: 4006900926

E: [Proteintech-CN@ptglab.com](mailto:Proteintech-CN@ptglab.com)

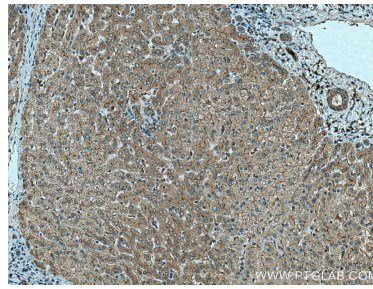
W: [ptgcn.com](http://ptgcn.com)

**This product is exclusively available under Proteintech Group brand and is not available to purchase from any other manufacturer.**

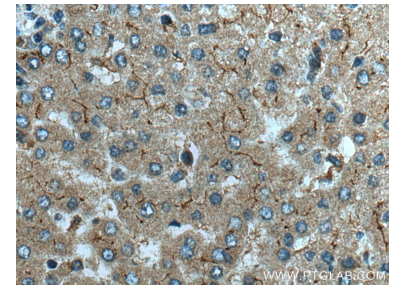
## Selected Validation Data



Various lysates were subjected to SDS PAGE followed by western blot with 28085-1-AP (NPC1L1 antibody) at dilution of 1:1000 incubated at room temperature for 1.5 hours.



Immunohistochemical analysis of paraffin-embedded human liver tissue slide using 28085-1-AP (NPC1L1 antibody) at dilution of 1:200 (under 10x lens). Heat mediated antigen retrieval with Tris-EDTA buffer (pH 9.0).



Immunohistochemical analysis of paraffin-embedded human liver tissue slide using 28085-1-AP (NPC1L1 antibody) at dilution of 1:200 (under 40x lens). Heat mediated antigen retrieval with Tris-EDTA buffer (pH 9.0).