

For Research Use Only

# CLK3 Polyclonal antibody

Catalog Number: 28037-1-AP



## Basic Information

Catalog Number:

28037-1-AP

Size:

380 ug/ml

Source:

Rabbit

Isotype:

IgG

Immunogen Catalog Number:

AG27741

GenBank Accession Number:

BC002555

GeneID (NCBI):

1198

UNIPROT ID:

P49761

Full Name:

CDC-like kinase 3

Calculated MW:

73 kDa

Observed MW:

56 kDa

Purification Method:

Antigen affinity purification

Recommended Dilutions:

WB 1:5000-1:50000

IHC 1:500-1:2000

## Applications

Tested Applications:

WB, IHC, ELISA

Species Specificity:

human, mouse

**Note-IHC: suggested antigen retrieval with TE buffer pH 9.0; (\*) Alternatively, antigen retrieval may be performed with citrate buffer pH 6.0**

Positive Controls:

WB : Jurkat cells, MCF-7 cells, mouse testis tissue

IHC : human ovary cancer tissue,

## Background Information

CLK3 (CDC Like Kinase 3) encodes a protein belonging to the serine/threonine type protein kinase family. This protein is a nuclear dual-specificity kinase that functions on substrates containing serine/threonine and tyrosine. CLK3 modulates RNA splicing by phosphorylating serine/arginine-rich proteins such as SRSF1 and SRSF3. CLK3 dysregulation was indicated to be a high-penetrant factor in different types of human tumors even though its functions in tumors were not clearly characterized (PMID: 32453420). CLK3 has 4 isoforms, which is 74kDa, 59kDa, 56kDa and 18kDa.

## Storage

Storage:

Store at -20°C. Stable for one year after shipment.

Storage Buffer:

PBS with 0.02% sodium azide and 50% glycerol pH 7.3.

Aliquoting is unnecessary for -20°C storage

For technical support and original validation data for this product please contact:

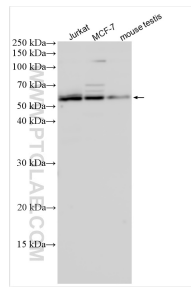
T: 4006900926

E: [Proteintech-CN@ptglab.com](mailto:Proteintech-CN@ptglab.com)

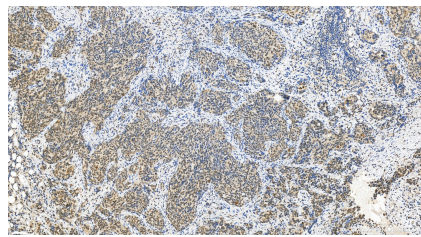
W: [ptgcn.com](http://ptgcn.com)

This product is exclusively available under Proteintech Group brand and is not available to purchase from any other manufacturer.

## Selected Validation Data



Various lysates were subjected to SDS PAGE followed by western blot with 28037-1-AP (CLK3 antibody) at dilution of 1:15000 incubated at room temperature for 1.5 hours.



Immunohistochemical analysis of paraffin-embedded human ovary cancer tissue slide using 28037-1-AP (CLK3 antibody) at dilution of 1:1000 (under 20x lens). Heat mediated antigen retrieval with Tris-EDTA buffer (pH 9.0).