

For Research Use Only

# SPESP1 Polyclonal antibody

Catalog Number: 28010-1-AP

1 Publications



## Basic Information

Catalog Number:

28010-1-AP

Size:

1000 µg/ml

Source:

Rabbit

Isotype:

IgG

Immunogen Catalog Number:

AG27764

GenBank Accession Number:

BC017998

GeneID (NCBI):

246777

UNIPROT ID:

Q6UW49

Full Name:

sperm equatorial segment protein 1

Calculated MW:

39 kDa

Observed MW:

67 kDa, 77 kDa

Purification Method:

Antigen affinity purification

Recommended Dilutions:

WB 1:500-1:2000

## Applications

Tested Applications:

WB, ELISA

Cited Applications:

WB, IF

Species Specificity:

Human, mouse, rat

Cited Species:

human, mouse

Positive Controls:

WB : mouse testis tissue, rat testis tissue

## Background Information

### Notable Publications

Author	Pubmed ID	Journal	Application
Yun Zhong	38764260	Clin Transl Med	WB,IF

## Storage

Storage:

Store at -20°C. Stable for one year after shipment.

Storage Buffer:

PBS with 0.02% sodium azide and 50% glycerol pH 7.3.

Aliquoting is unnecessary for -20°C storage

For technical support and original validation data for this product please contact:

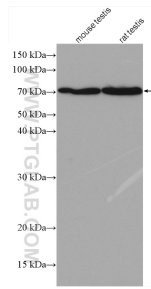
T: 4006900926

E: [Proteintech-CN@ptglab.com](mailto:Proteintech-CN@ptglab.com)

W: [ptgcn.com](http://ptgcn.com)

This product is exclusively available under Proteintech Group brand and is not available to purchase from any other manufacturer.

## Selected Validation Data



Various lysates were subjected to SDS PAGE followed by western blot with 28010-1-AP (SPESP1 antibody) at dilution of 1:1000 incubated at room temperature for 1.5 hours.