

For Research Use Only

# KCNQ5 Polyclonal antibody, PBS Only

Catalog Number:28000-1-PBS



## Basic Information

Catalog Number:

28000-1-PBS

Concentration:

1 mg/ml

Source:

Rabbit

Isotype:

IgG

Immunogen Catalog Number:

AG27622

GenBank Accession Number:

NM\_001160130

GeneID (NCBI):

56479

UNIPROT ID:

Q9NR82

Full Name:

potassium voltage-gated channel,  
KQT-like subfamily, member 5

Calculated MW:

102 kDa

Observed MW:

100 kDa

Purification Method:

Antigen affinity purification

## Applications

Tested Applications:

WB, IP, Indirect ELISA

Species Specificity:

human, mouse, rat

## Background Information

Potassium voltage-gated channel subfamily Q member 5 (KCNQ5, also known as Kv7.5 and MRD46) is widely expressed in the brain and generates M-type current. It has a role in the regulation of neuronal excitability (PMID: 10816588). KCNQ5 mutations are associated with increased excitability and decreased repolarization reserve, lead to pathophysiology (PMID: 28669405).

## Storage

Storage:

Store at -80°C.

**The product is shipped with ice packs. Upon receipt, store it immediately at -80°C**

Storage Buffer:

PBS Only

For technical support and original validation data for this product please contact:

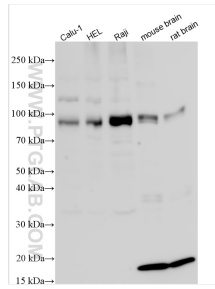
T: 4006900926

E: [Proteintech-CN@ptglab.com](mailto:Proteintech-CN@ptglab.com)

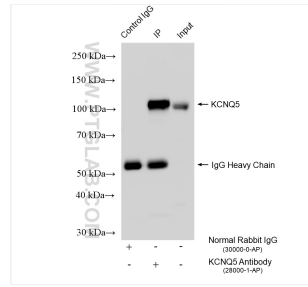
W: [ptgcn.com](http://ptgcn.com)

**This product is exclusively available under Proteintech Group brand and is not available to purchase from any other manufacturer.**

## Selected Validation Data



Various lysates were subjected to SDS PAGE followed by western blot with 28000-1-AP (KCNQ5 antibody) at dilution of 1:2000 incubated at room temperature for 1.5 hours. This data was developed using the same antibody clone with 28000-1-PBS in a different storage buffer formulation.



IP result of anti-KCNQ5 (IP:28000-1-AP, 4ug; Detection:28000-1-AP 1:500) with Raji cells lysate 1600 ug. This data was developed using the same antibody clone with 28000-1-PBS in a different storage buffer formulation.