

For Research Use Only

# PHLDB2 Polyclonal antibody, PBS Only

Catalog Number: 27940-1-PBS



## Basic Information

Catalog Number:

27940-1-PBS

Concentration:

1 mg/ml

Source:

Rabbit

Isotype:

IgG

Immunogen Catalog Number:

AG27331

GenBank Accession Number:

BC142678

GeneID (NCBI):

90102

UNIPROT ID:

Q865Q0

Full Name:

pleckstrin homology-like domain,

family B, member 2

Calculated MW:

1253 aa, 142 kDa

Observed MW:

150 kDa

Purification Method:

Antigen affinity purification

## Applications

Tested Applications:

WB, IHC, Indirect ELISA

Species Specificity:

human, mouse

## Background Information

The pleckstrin homology-like domain (PHLD) class of proteins are multifunctional proteins comprised of two families of proteins, PHLDA and PHLDB, each with 3 members: PHLDA1, PHLDA2, PHLDA3, PHLDB1, PHLDB2, and PHLDB3 (PMID: 32429563). All the family members possess a pleckstrin homology (PH) domain. PHLB2, also known as LL5-beta, contains two predicted coiled-coil domains, a serine-rich region predicted to contain multiple protein kinase C phosphorylation sites in addition to a PH domain (PMID: 15851520). PHLB2 is a filamin-binding protein that is an effector of the PI3K signaling pathway (PMID: 17174070). It is a PtdIns(3,4,5)P<sub>3</sub> (PIP<sub>3</sub>) binding protein and can translocate to the plasma membrane in a receptor and PI3K-dependant manner (PMID: 12376540). PHLB2 has also been reported as a component of the postsynaptic apparatus and a regulator of postsynaptic differentiation (PMID: 15851520).

## Storage

Storage:

Store at -80°C.

The product is shipped with ice packs. Upon receipt, store it immediately at -80°C

Storage Buffer:

PBS Only

For technical support and original validation data for this product please contact:

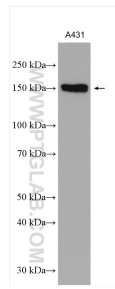
T: 4006900926

E: [Proteintech-CN@ptglab.com](mailto:Proteintech-CN@ptglab.com)

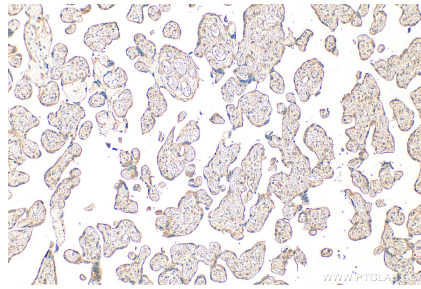
W: [ptgcn.com](http://ptgcn.com)

This product is exclusively available under Proteintech Group brand and is not available to purchase from any other manufacturer.

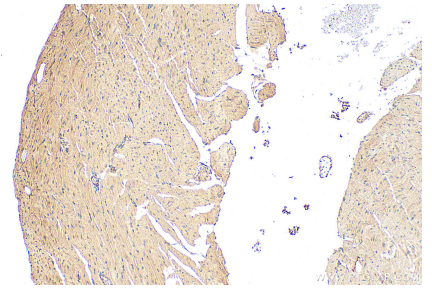
## Selected Validation Data



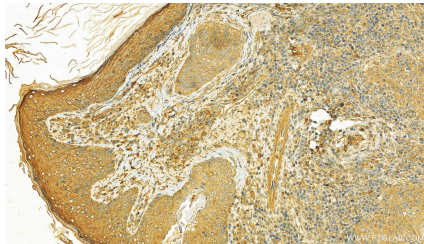
A431 cells were subjected to SDS PAGE followed by western blot with 27940-1-AP (PHLDB2 antibody) at dilution of 1:4000 incubated at room temperature for 1.5 hours. This data was developed using the same antibody clone with 27940-1-PBS in a different storage buffer formulation.



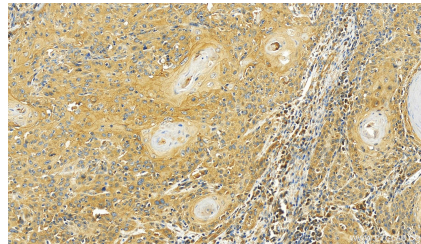
Immunohistochemical analysis of paraffin-embedded human placenta tissue slide using 27940-1-AP (PHLDB2 antibody) at dilution of 1:600 (under 10x lens). Heat mediated antigen retrieval with Tris-EDTA buffer (pH 9.0). This data was developed using the same antibody clone with 27940-1-PBS in a different storage buffer formulation.



Immunohistochemical analysis of paraffin-embedded mouse heart tissue slide using 27940-1-AP (PHLDB2 antibody) at dilution of 1:600 (under 10x lens). Heat mediated antigen retrieval with Tris-EDTA buffer (pH 9.0). This data was developed using the same antibody clone with 27940-1-PBS in a different storage buffer formulation.



Immunohistochemical analysis of paraffin-embedded skin cancer slide using 27940-1-AP (PHLDB2 antibody) at dilution of 1:800 (under 20x lens). Heat mediated antigen retrieval with Tris-EDTA buffer (pH 9.0). This data was developed using the same antibody clone with 27940-1-PBS in a different storage buffer formulation.



Immunohistochemical analysis of paraffin-embedded skin cancer slide using 27940-1-AP (PHLDB2 antibody) at dilution of 1:800 (under 20x lens). Heat mediated antigen retrieval with Tris-EDTA buffer (pH 9.0). This data was developed using the same antibody clone with 27940-1-PBS in a different storage buffer formulation.