

For Research Use Only

C1orf35 Polyclonal antibody

Catalog Number: 27930-1-AP

1 Publications



Basic Information

Catalog Number:

27930-1-AP

Concentration:

650 ug/ml

Source:

Rabbit

Isotype:

IgG

Immunogen Catalog Number:

AG14374

GenBank Accession Number:

BC002843

GeneID (NCBI):

79169

UNIPROT ID:

Q9BU76

Full Name:

chromosome 1 open reading frame 35

Calculated MW:

263 aa, 29 kDa

Observed MW:

35 kDa

Purification Method:

Antigen affinity purification

Recommended Dilutions:

WB: 1:500-1:2000

IHC: 1:50-1:500

Applications

Tested Applications:

WB, IHC, ELISA

Cited Applications:

WB

Species Specificity:

human, mouse

Cited Species:

human

Note-IHC: suggested antigen retrieval with TE buffer pH 9.0; (*) Alternatively, antigen retrieval may be performed with citrate buffer pH 6.0

Positive Controls:

WB : HEK-293 cells, NIH/3T3 cells, HT-29 cells

IHC : human kidney tissue,

Background Information

27930-1-AP antibody detects the 35 kDa phosphorylated protein in SDS-PAGE.

Notable Publications

Author	Pubmed ID	Journal	Application
Wei Zhuo	35597784	Cell Discov	WB

Storage

Storage:

Store at -20°C. Stable for one year after shipment.

Storage Buffer:

PBS with 0.02% sodium azide and 50% glycerol, pH7.3

Aliquoting is unnecessary for -20°C storage

For technical support and original validation data for this product please contact:

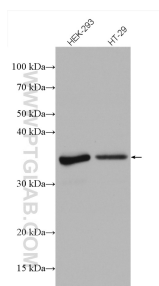
T: 4006900926

E: Proteintech-CN@ptglab.com

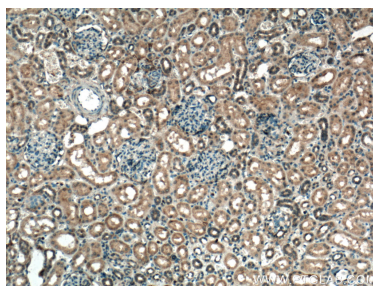
W: ptgcn.com

This product is exclusively available under Proteintech Group brand and is not available to purchase from any other manufacturer.

Selected Validation Data



Various lysates were subjected to SDS PAGE followed by western blot with 27930-1-AP (C1orf35 antibody) at dilution of 1:1000 incubated at room temperature for 1.5 hours.



Immunohistochemical analysis of paraffin-embedded human kidney tissue slide using 27930-1-AP (C1orf35 antibody) at dilution of 1:200 (under 10x lens. Heat mediated antigen retrieval with Tris-EDTA buffer (pH 9.0).