

CYFIP1 Polyclonal antibody

Catalog Number: 27925-1-AP

Basic Information

Catalog Number:

27925-1-AP

Size:

500 µg/ml

Source:

Rabbit

Isotype:

IgG

Immunogen Catalog Number:

AG27419

GenBank Accession Number:

BC005097

GeneID (NCBI):

23191

UNIPROT ID:

Q7L576

Full Name:

cytoplasmic FMR1 interacting protein

1

Calculated MW:

1253 aa, 145 kDa

Observed MW:

140-145 kDa

Purification Method:

Antigen affinity purification

Recommended Dilutions:

WB 1:500-1:3000

IF/ICC 1:50-1:500

Applications

Tested Applications:

IF/ICC, WB, ELISA

Species Specificity:

Human, mouse, rat

Positive Controls:

WB : mouse brain tissue, rat brain tissue

IF/ICC : HeLa cells,

Background Information

CYFIP1 is a protein that regulates cytoskeletal dynamics and protein translation. The encoded protein is a component of the WAVE regulatory complex (WRC), which promotes actin polymerization. This protein also interacts with the synaptic functional regulator FMR1 protein and translation initiation factor 4E to inhibit protein translation. A large chromosomal deletion including this gene is associated with increased risk of schizophrenia and epilepsy in human patients. Reduced expression of this gene has been observed in various human cancers and the encoded protein may inhibit tumor invasion.

Storage

Storage:

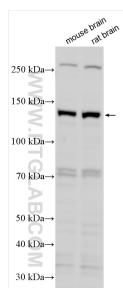
Store at -20°C. Stable for one year after shipment.

Storage Buffer:

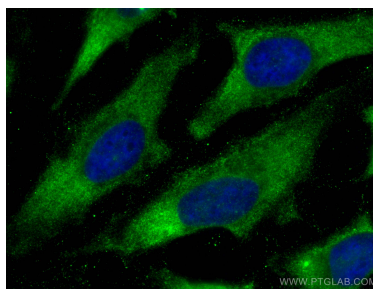
PBS with 0.02% sodium azide and 50% glycerol pH 7.3.

Aliquoting is unnecessary for -20°C storage

Selected Validation Data



Various lysates were subjected to SDS PAGE followed by western blot with 27925-1-AP (CYFIP1 antibody) at dilution of 1:1500 incubated at room temperature for 1.5 hours.



Immunofluorescent analysis of (-20°C Ethanol) fixed HeLa cells using CYFIP1 antibody (27925-1-AP) at dilution of 1:200 and CoraLite® 488-Conjugated AffiniPure Goat Anti-Rabbit IgG(H+L).