

For Research Use Only

# CRM1 Polyclonal antibody

Catalog Number: 27917-1-AP **4 Publications**



## Basic Information

<b>Catalog Number:</b> 27917-1-AP	<b>GenBank Accession Number:</b> BC032847	<b>Purification Method:</b> Antigen affinity purification
<b>Size:</b> 550 µg/ml	<b>GeneID (NCBI):</b> 7514	<b>Recommended Dilutions:</b> WB 1:2000-1:10000 IHC 1:50-1:500
<b>Source:</b> Rabbit	<b>UNIPROT ID:</b> O14980	
<b>Isotype:</b> IgG	<b>Full Name:</b> exportin 1 (CRM1 homolog, yeast)	
<b>Immunogen Catalog Number:</b> AG27207	<b>Calculated MW:</b> 1071 aa, 123 kDa	
	<b>Observed MW:</b> 123 kDa	

## Applications

<b>Tested Applications:</b> IHC, WB, ELISA	<b>Positive Controls:</b> WB : HEK-293 cells, C6 cells, HeLa cells, MCF-7 cells, NIH/3T3 cells, K-562 cells, HT-1080 cells IHC : human colon cancer tissue,
<b>Cited Applications:</b> WB, IF, IHC	
<b>Species Specificity:</b> Human, Mouse, Rat	
<b>Cited Species:</b> human, mouse	
<b>Note-IHC: suggested antigen retrieval with TE buffer pH 9.0; (*) Alternatively, antigen retrieval may be performed with citrate buffer pH 6.0</b>	

## Background Information

CRM1 (chromosome region maintenance 1, also known as exportin-1 or XPO1), a member of the karyopherin  $\beta$  family of transport receptors, is an important nuclear export receptor recognizing proteins bearing a leucine-rich nuclear export signal (PMID: 9323133). CRM1 is the major receptor for the export of proteins out of the nucleus and is also required for transport of many RNAs (PMID: 17317185). In addition to nuclear export, CRM1 also plays a role in centrosome duplication and spindle assembly (PMID: 22773955). Elevated CRM1 expression has been reported in several cancers, which implicates CRM1 as a potential anti-cancer drug target (PMID: 22677130; 21683812).

## Notable Publications

Author	Pubmed ID	Journal	Application
Sukhbir Kaur	34841476	J Cell Commun Signal	IF
Xu Wang	38215751	Mol Cell	WB
Deguan Lv	37979586	Mol Cell	WB

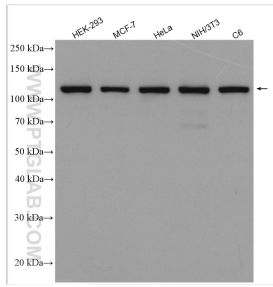
## Storage

**Storage:**  
Store at -20°C. Stable for one year after shipment.  
**Storage Buffer:**  
PBS with 0.02% sodium azide and 50% glycerol pH 7.3.  
Aliquoting is unnecessary for -20°C storage

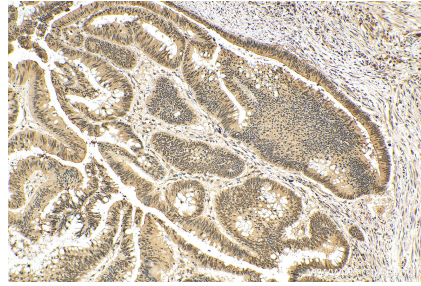
For technical support and original validation data for this product please contact:  
T: 4006900926 E: Proteintech-CN@ptglab.com W: ptgcn.com

**This product is exclusively available under Proteintech Group brand and is not available to purchase from any other manufacturer.**

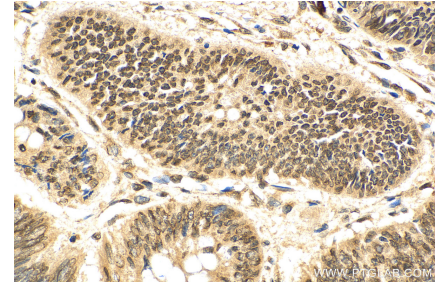
## Selected Validation Data



Various lysates were subjected to SDS PAGE followed by western blot with 27917-1-AP (CRM1 antibody) at dilution of 1:5000 incubated at room temperature for 1.5 hours.



Immunohistochemical analysis of paraffin-embedded human colon cancer tissue slide using 27917-1-AP (CRM1 antibody) at dilution of 1:200 (under 10x lens). Heat mediated antigen retrieval with Tris-EDTA buffer (pH 9.0).



Immunohistochemical analysis of paraffin-embedded human colon cancer tissue slide using 27917-1-AP (CRM1 antibody) at dilution of 1:200 (under 40x lens). Heat mediated antigen retrieval with Tris-EDTA buffer (pH 9.0).