

For Research Use Only

UBE2J1 Polyclonal antibody, PBS Only

Catalog Number: 27890-1-PBS



Basic Information

Catalog Number:

27890-1-PBS

Source:

Rabbit

Isotype:

IgG

Immunogen Catalog Number:

AG27310

GenBank Accession Number:

BC013973

GeneID (NCBI):

51465

UNIPROT ID:

Q9Y385

Full Name:

ubiquitin-conjugating enzyme E2, J1
(UBC6 homolog, yeast)

Calculated MW:

318 aa, 35 kDa

Observed MW:

35-40 kDa

Purification Method:

Antigen affinity purification

Applications

Tested Applications:

WB, Indirect ELISA

Species Specificity:

human

Background Information

Ubiquitin-conjugating enzyme E2 J1 (UBE2J1) has been proven to participate in the ubiquitination of multiple substrate proteins. Belonged to the ubiquitin-conjugating E2 enzyme family, the ubiquitin-conjugating enzyme E2 J1 (UBE2J1) is anchored in the endoplasmic reticulum (ER) membrane and contains a luminal domain, a single transmembrane region, and a cytoplasmic catalytic domain. (PMID: 36567344, PMID: 38030789)

Storage

Storage:

Store at -80°C.

The product is shipped with ice packs. Upon receipt, store it immediately at -80°C

Storage Buffer:

PBS only, pH7.3

For technical support and original validation data for this product please contact:

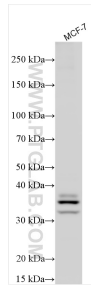
T: 4006900926

E: Proteintech-CN@ptglab.com

W: ptgcn.com

This product is exclusively available under Proteintech Group brand and is not available to purchase from any other manufacturer.

Selected Validation Data



MCF-7 cells were subjected to SDS PAGE followed by western blot with 27890-1-AP (UBE2J1 antibody) at dilution of 1:30000 incubated at room temperature for 1.5 hours. This data was developed using the same antibody clone with 27890-1-PBS in a different storage buffer formulation.