

For Research Use Only

UBE2J1 Polyclonal antibody

Catalog Number: 27890-1-AP



Basic Information

Catalog Number: 27890-1-AP	GenBank Accession Number: BC013973	Purification Method: Antigen affinity purification
Source: Rabbit	GeneID (NCBI): 51465	Recommended Dilutions: WB: 1:5000-1:50000
Isotype: IgG	UNIPROT ID: Q9Y385	
Immunogen Catalog Number: AG27310	Full Name: ubiquitin-conjugating enzyme E2, J1 (UBC6 homolog, yeast)	
	Calculated MW: 318 aa, 35 kDa	
	Observed MW: 35-40 kDa	

Applications

Tested Applications: WB, ELISA	Positive Controls: WB : MCF-7 cells,
Species Specificity: human	

Background Information

Ubiquitin-conjugating enzyme E2 J1 (UBE2J1) has been proven to participate in the ubiquitination of multiple substrate proteins. Belonged to the ubiquitin-conjugating E2 enzyme family, the ubiquitin-conjugating enzyme E2 J1 (UBE2J1) is anchored in the endoplasmic reticulum (ER) membrane and contains a luminal domain, a single transmembrane region, and a cytoplasmic catalytic domain. (PMID: 36567344, PMID: 38030789)

Storage

Storage:
Store at -20°C. Stable for one year after shipment.
Storage Buffer:
PBS with 0.02% sodium azide and 50% glycerol, pH7.3
Aliquoting is unnecessary for -20°C storage

For technical support and original validation data for this product please contact:

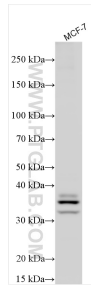
T: 4006900926

E: Proteintech-CN@ptglab.com

W: ptgcn.com

This product is exclusively available under Proteintech Group brand and is not available to purchase from any other manufacturer.

Selected Validation Data



MCF-7 cells were subjected to SDS PAGE followed by western blot with 27890-1-AP (UBE2J1 antibody) at dilution of 1:30000 incubated at room temperature for 1.5 hours.