

For Research Use Only

SLC25A46 Polyclonal antibody

Catalog Number: 27869-1-AP



Basic Information

Catalog Number: 27869-1-AP	GenBank Accession Number: BC017169	Purification Method: Antigen affinity purification
Size: 550 µg/ml	GeneID (NCBI): 91137	Recommended Dilutions: WB 1:200-1:1000 IHC 1:50-1:500 IF 1:50-1:500
Source: Rabbit	UNIPROT ID: Q96AG3	
Isotype: IgG	Full Name: solute carrier family 25, member 46	
Immunogen Catalog Number: AG27293	Calculated MW: 418 aa, 46 kDa	
	Observed MW: 46 kDa	

Applications

Tested Applications:
IF/ICC, IHC, WB, ELISA

Species Specificity:
Human, mouse

Note-IHC: suggested antigen retrieval with TE buffer pH 9.0; (*) Alternatively, antigen retrieval may be performed with citrate buffer pH 6.0

Positive Controls:

WB: mouse brain tissue,

IHC: human colon tissue, human medulloblastoma tissue

IF: NIH/3T3 cells,

Background Information

Solute carrier family 25 member 46 (SLC25A46), a highly conserved protein among various species including vertebrates, is a nuclear gene encoding mitochondrial carriers. SLC25A46 is involved in mitochondrial fission and the transport of lipids from the endoplasmic reticulum to mitochondria (PMID: 33277645). SLC25A46 has 3 isoforms with molecular weights of 30, 37 and 46 kDa, respectively.

Storage

Storage:

Store at -20°C. Stable for one year after shipment.

Storage Buffer:

PBS with 0.02% sodium azide and 50% glycerol pH 7.3.

Aliquoting is unnecessary for -20°C storage

For technical support and original validation data for this product please contact:

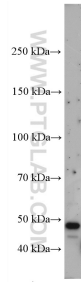
T: 4006900926

E: Proteintech-CN@ptglab.com

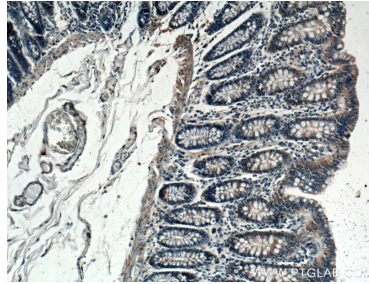
W: ptgcn.com

This product is exclusively available under Proteintech Group brand and is not available to purchase from any other manufacturer.

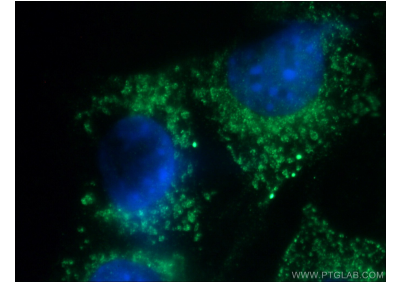
Selected Validation Data



mouse brain tissue were subjected to SDS PAGE followed by western blot with 27869-1-AP (SLC25A46 antibody) at dilution of 1:300 incubated at room temperature for 1.5 hours.



Immunohistochemical analysis of paraffin-embedded human colon tissue slide using 27869-1-AP (SLC25A46 antibody) at dilution of 1:200 (under 10x lens).



Immunofluorescent analysis of (-20°C Ethanol) fixed NIH/3T3 cells using 27869-1-AP (SLC25A46 antibody) at dilution of 1:50 and Alexa Fluor 488-conjugated AffiniPure Goat Anti-Rabbit IgG(H+L).