

SEMA3A Polyclonal antibody

Catalog Number: 27836-1-AP

4 Publications

Basic Information

Catalog Number:

27836-1-AP

Size:

900 µg/ml

Source:

Rabbit

Isotype:

IgG

Immunogen Catalog Number:

AG27173

GenBank Accession Number:

BC111416

GeneID (NCBI):

10371

UNIPROT ID:

Q14563

Full Name:

sema domain, immunoglobulin domain (Ig), short basic domain, secreted, (semaphorin) 3A

Calculated MW:

771 aa, 89 kDa

Observed MW:

89 and 65 kDa

Purification Method:

Antigen affinity purification

Recommended Dilutions:

WB 1:500-1:1000

IF/ICC 1:200-1:800

Applications

Tested Applications:

WB, IF/ICC, ELISA

Cited Applications:

WB

Species Specificity:

Human

Cited Species:

human, rat

Positive Controls:

WB : PC-12 cells, SH-SY5Y cells

IF/ICC : HeLa cells,

Background Information

SEMA3A (Semaphorin 3A), a class-3 semaphorin signaling protein, is involved in cell signaling with PlexinA1 and Neuropilin-1 (NRP1) receptors and it is responsible for recruiting dendritic cells into lymphatics. It's widely expressed in different tissues (PMID:10766232). SEMA3A has been shown to exert osteoprotective effects, characterized by increasing bone formation while inhibiting the activation of osteoclast precursor cells (PMID:36598593). However, SEMA3A also modulates the immune system. SEMA3A expression in a myocardial infarct area enhances macrophage polarization and inhibits monocyte migration into the lesion area (PMID:28540528).

Notable Publications

Author	Pubmed ID	Journal	Application
Xiaochi Chang	35037251	J Periodontal Res	WB
Xianbin Wang	38373630	Neurosci Lett	WB
Jin Wu	37516879	J Orthop Surg Res	WB

Storage

Storage:

Store at -20°C. Stable for one year after shipment.

Storage Buffer:

PBS with 0.02% sodium azide and 50% glycerol pH 7.3.

Aliquoting is unnecessary for -20°C storage

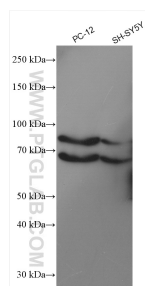
For technical support and original validation data for this product please contact:

T: 4006900926

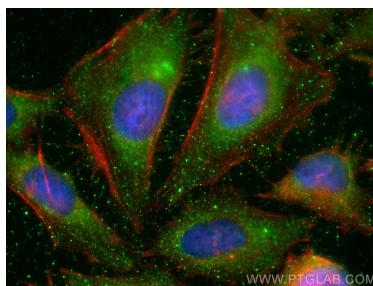
E: Proteintech-CN@ptglab.comW: ptgcn.com

This product is exclusively available under Proteintech Group brand and is not available to purchase from any other manufacturer.

Selected Validation Data



Various lysates were subjected to SDS PAGE followed by western blot with 27836-1-AP (SEMA3A antibody) at dilution of 1:600 incubated at room temperature for 1.5 hours.



Immunofluorescent analysis of (-20°C Ethanol) fixed HeLa cells using SEMA3A antibody (27836-1-AP) at dilution of 1:400 and CoraLite® 488-Conjugated AffiniPure Goat Anti-Rabbit IgG(H+L), CL594-phalloidin (red).