

For Research Use Only

# MTSS1L Polyclonal antibody

Catalog Number: 27832-1-AP

2 Publications



## Basic Information

<b>Catalog Number:</b> 27832-1-AP	<b>GenBank Accession Number:</b> BC002770	<b>Purification Method:</b> Antigen affinity purification
<b>Size:</b> 500 ug/ml	<b>GeneID (NCBI):</b> 92154	<b>Recommended Dilutions:</b> WB 1:2000-1:10000
<b>Source:</b> Rabbit	<b>UNIPROT ID:</b> Q765P7	IP 0.5-4.0 ug for 1.0-3.0 mg of total protein lysate
<b>Isotype:</b> IgG	<b>Full Name:</b> metastasis suppressor 1-like	IHC 1:50-1:500
<b>Immunogen Catalog Number:</b> AG27216	<b>Observed MW:</b> 68-70 kDa	IF/ICC 1:50-1:500

## Applications

<b>Tested Applications:</b> WB, IHC, IF/ICC, IP, ELISA	<b>Positive Controls:</b> <b>WB :</b> HEK-293T cells, HeLa cells, Jurkat cells, U-251 cells, NIH/3T3 cells, mouse brain tissue, rat brain tissue
<b>Cited Applications:</b> WB	<b>IP :</b> Jurkat cells,
<b>Species Specificity:</b> human, mouse, rat	<b>IHC :</b> mouse brain tissue,
<b>Cited Species:</b> human	<b>IF/ICC :</b> MCF-7 cells,
<b>Note-IHC: suggested antigen retrieval with TE buffer pH 9.0; (*) Alternatively, antigen retrieval may be performed with citrate buffer pH 6.0</b>	

## Background Information

MTSS2, also known as MTSS1L, contains a conserved N-terminal domain, called an IRSP53 /MIM homology domain (IMD) or inverse BAR domain, that is involved in plasma membrane dynamics (PMID: 20875796). MTSS2 potentiated PDGF-mediated formation of membrane ruffles and lamellipodia in fibroblasts, acting via RAC1 activation (PMID:14752106). MTSS2 is implicated in intellectual developmental disorders with ocular anomalies and distinctive facial features (PMID: 36067766).

## Notable Publications

Author	Pubmed ID	Journal	Application
Wei Zhuo	35597784	Cell Discov	WB
Xiaoli Tang	31281935	Acta Biochim Biophys Sin (Shanghai)	WB

## Storage

**Storage:**  
Store at -20°C. Stable for one year after shipment.  
**Storage Buffer:**  
PBS with 0.02% sodium azide and 50% glycerol pH 7.3.  
Aliquoting is unnecessary for -20°C storage

For technical support and original validation data for this product please contact:

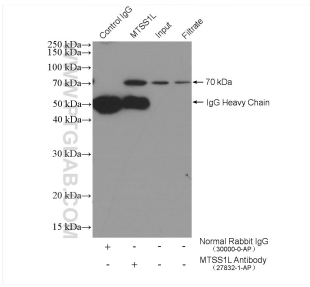
T: 4006900926

E: [Proteintech-CN@ptglab.com](mailto:Proteintech-CN@ptglab.com)

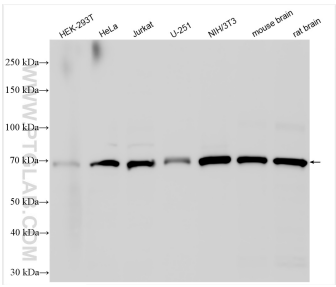
W: [ptgcn.com](http://ptgcn.com)

This product is exclusively available under Proteintech Group brand and is not available to purchase from any other manufacturer.

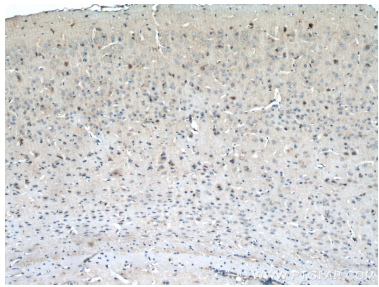
Selected Validation Data



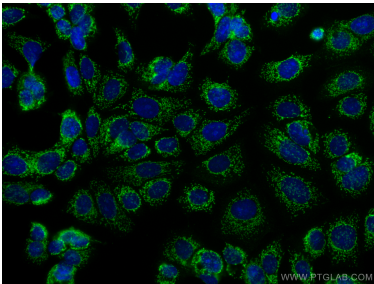
IP result of anti-MTSS1L (IP:27832-1-AP, 4ug; Detection:27832-1-AP 1:300) with Jurkat cells lysate 4000 ug.



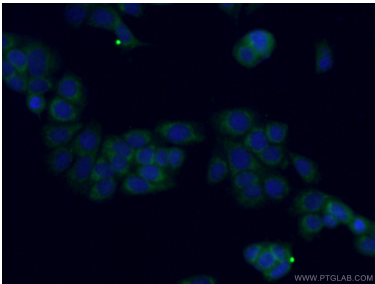
Various lysates were subjected to SDS PAGE followed by western blot with 27832-1-AP (MTSS1L antibody) at dilution of 1:5000 incubated at room temperature for 1.5 hours.



Immunohistochemical analysis of paraffin-embedded mouse brain tissue slide using 27832-1-AP (MTSS1L antibody) at dilution of 1:200 (under 10x lens. Heat mediated antigen retrieval with Tris-EDTA buffer (pH 9.0).



Immunofluorescent analysis of (-20°C Methanol) fixed MCF-7 cells using MTSS1L antibody (27832-1-AP) at dilution of 1:200 and CoraLite®488-Conjugated AffiniPure Goat Anti-Rabbit IgG(H+L).



Immunofluorescent analysis of (-20°C Ethanol) fixed MCF-7 cells using 27832-1-AP (MTSS1L antibody) at dilution of 1:50 and Alexa Fluor 488-Conjugated AffiniPure Goat Anti-Rabbit IgG(H+L).