

For Research Use Only

# MRP1 Polyclonal antibody

Catalog Number: 27825-1-AP

2 Publications



## Basic Information

Catalog Number:

27825-1-AP

Size:

600 µg/ml

Source:

Rabbit

Isotype:

IgG

Immunogen Catalog Number:

AG27048

GenBank Accession Number:

NM\_004996

GeneID (NCBI):

4363

Full Name:

ATP-binding cassette, sub-family C (CFTR/MRP), member 1

Calculated MW:

172 kDa

Observed MW:

180-190 kDa

Purification Method:

Antigen affinity purification

Recommended Dilutions:

WB 1:500-1:1000

IHC 1:50-1:500

## Applications

Tested Applications:

WB, IHC, ELISA

Cited Applications:

WB

Species Specificity:

Human

Cited Species:

human

Positive Controls:

WB : 37°C incubated HeLa cells,

IHC : human breast cancer tissue,

**Note-IHC: suggested antigen retrieval with TE buffer pH 9.0; (\*) Alternatively, antigen retrieval may be performed with citrate buffer pH 6.0**

## Background Information

Multidrug resistant-associated protein 1 (MRP1, also known as ABCC1) is a member of the ATP-binding cassette (ABC) transporter protein superfamily, subfamily C. MRP1 is overexpressed in cancers and contributes to the occurrence of multidrug resistance (MDR). Expression of MRP1 has been considered as a negative marker for the outcome of chemotherapy. Recently MRP1 has been reported to play a crucial role in A $\beta$  clearance at the blood-brain barrier.

## Notable Publications

Author	Pubmed ID	Journal	Application
Caixin Qiu	39306871	Drug Resist Updat	WB
Wei Heng	38876260	Biochem Pharmacol	WB

## Storage

Storage:

Store at -20°C. Stable for one year after shipment.

Storage Buffer:

PBS with 0.02% sodium azide and 50% glycerol pH 7.3.

Aliquoting is unnecessary for -20°C storage

For technical support and original validation data for this product please contact:

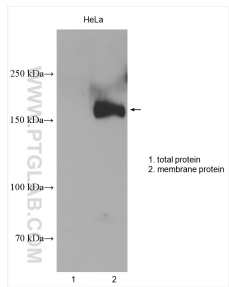
T: 4006900926

E: [Proteintech-CN@ptglab.com](mailto:Proteintech-CN@ptglab.com)

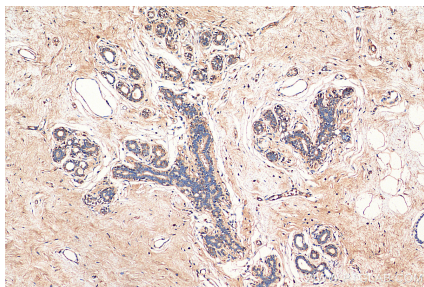
W: [ptgcn.com](http://ptgcn.com)

This product is exclusively available under Proteintech Group brand and is not available to purchase from any other manufacturer.

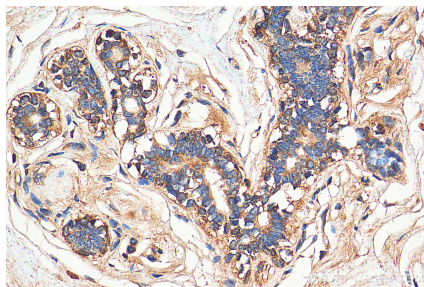
## Selected Validation Data



37°C incubated HeLa cells were subjected to SDS PAGE followed by western blot with 27825-1-AP (MRP1 antibody) at dilution of 1:600 incubated at room temperature for 1.5 hours.



Immunohistochemical analysis of paraffin-embedded human breast cancer tissue slide using 27825-1-AP (ABCC 1 antibody) at dilution of 1:200 (under 10x lens). Heat mediated antigen retrieval with Tris-EDTA buffer (pH 9.0).



Immunohistochemical analysis of paraffin-embedded human breast cancer tissue slide using 27825-1-AP (ABCC 1 antibody) at dilution of 1:200 (under 40x lens). Heat mediated antigen retrieval with Tris-EDTA buffer (pH 9.0).