

For Research Use Only

# SPG7 Polyclonal antibody, PBS Only

Catalog Number:27801-1-PBS



## Basic Information

Catalog Number:

27801-1-PBS

Concentration:

1 mg/ml

Source:

Rabbit

Isotype:

IgG

Immunogen Catalog Number:

AG26265

GenBank Accession Number:

BC007692

GeneID (NCBI):

6687

UNIPROT ID:

Q9UQ90

Full Name:

spastic paraplegia 7 (pure and complicated autosomal recessive)

Calculated MW:

88 kDa

Observed MW:

54 kDa, 70 kDa, 80kDa

Purification Method:

Antigen affinity purification

## Applications

Tested Applications:

WB, IHC, IP, Indirect ELISA

Species Specificity:

human, mouse

## Background Information

SPG7 encodes a nuclear-encoded mitochondrial metalloprotease protein that is a member of the AAA protein family. Two transcript variants encoding distinct isoforms have been identified. The molecular weight of SPG7 is about 88-100 kDa (precursor), 80 kDa (intermediate) and 70 kDa (mature)(PMID: 24767997), while the molecular weight of isoform 2 is about 54 kDa.

## Storage

Storage:

Store at -80°C.

**The product is shipped with ice packs. Upon receipt, store it immediately at -80°C**

Storage Buffer:

PBS only, pH7.3

For technical support and original validation data for this product please contact:

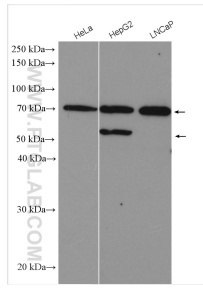
T: 4006900926

E: Proteintech-CN@ptglab.com

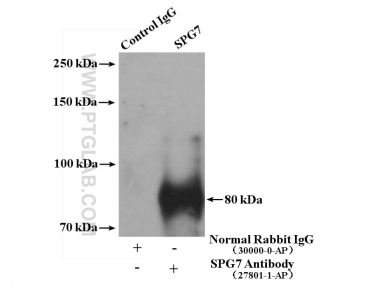
W: ptgcn.com

**This product is exclusively available under Proteintech Group brand and is not available to purchase from any other manufacturer.**

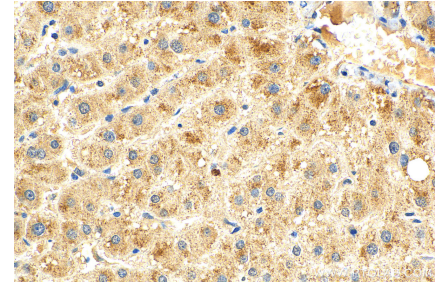
## Selected Validation Data



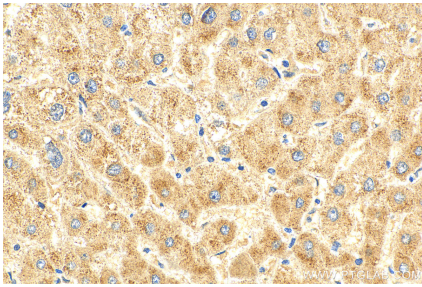
Various lysates were subjected to SDS PAGE followed by western blot with 27801-1-AP (SPG7 antibody) at dilution of 1:1000 incubated at room temperature for 1.5 hours. This data was developed using the same antibody clone with 27801-1-PBS in a different storage buffer formulation.



IP result of anti-SPG7 (IP:27801-1-AP, 4ug; Detection:27801-1-AP 1:500) with HeLa cells lysate 2800 ug. This data was developed using the same antibody clone with 27801-1-PBS in a different storage buffer formulation.



Immunohistochemical analysis of paraffin-embedded human liver tissue slide using 27801-1-AP (SPG7 antibody) at dilution of 1:200 (under 40x lens). Heat mediated antigen retrieval with Tris-EDTA buffer (pH 9.0). This data was developed using the same antibody clone with 27801-1-PBS in a different storage buffer formulation.



Immunohistochemical analysis of paraffin-embedded human liver tissue slide using 27801-1-AP (SPG7 antibody) at dilution of 1:200 (under 40x lens). Heat mediated antigen retrieval with Tris-EDTA buffer (pH 9.0). This data was developed using the same antibody clone with 27801-1-PBS in a different storage buffer formulation.