

For Research Use Only

SPG7 Polyclonal antibody

Catalog Number: 27801-1-AP



Basic Information

Catalog Number:

27801-1-AP

Size:

550 µg/ml

Source:

Rabbit

Isotype:

IgG

Immunogen Catalog Number:

AG26265

GenBank Accession Number:

BC007692

GeneID (NCBI):

6687

UNIPROT ID:

Q9UQ90

Full Name:

spastic paraplegia 7 (pure and complicated autosomal recessive)

Calculated MW:

88 kDa

Observed MW:

54 kDa, 70 kDa, 80kDa

Purification Method:

Antigen affinity purification

Recommended Dilutions:

WB 1:500-1:2000

IP 0.5-4.0 µg for 1.0-3.0 mg of total protein lysate

IHC 1:50-1:500

Applications

Tested Applications:

IHC, IP, WB, ELISA

Species Specificity:

Human, mouse

Note-IHC: suggested antigen retrieval with TE buffer pH 9.0; (*) Alternatively, antigen retrieval may be performed with citrate buffer pH 6.0

Positive Controls:

WB : HeLa cells, HepG2 cells, LNCaP cells

IP : HeLa cells,

IHC : human liver tissue,

Background Information

SPG7 encodes a nuclear-encoded mitochondrial metalloprotease protein that is a member of the AAA protein family. Two transcript variants encoding distinct isoforms have been identified. The molecular weight of SPG7 is about 88-100 kDa (precursor), 80 kDa (intermediate) and 70 kDa (mature)(PMID: 24767997), while the molecular weight of isoform 2 is about 54 kDa.

Storage

Storage:

Store at -20°C. Stable for one year after shipment.

Storage Buffer:

PBS with 0.02% sodium azide and 50% glycerol pH 7.3.

Aliquoting is unnecessary for -20°C storage

For technical support and original validation data for this product please contact:

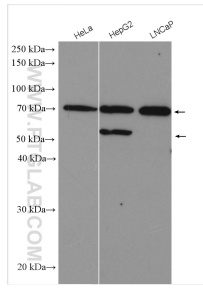
T: 4006900926

E: Proteintech-CN@ptglab.com

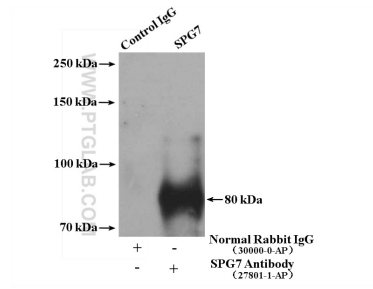
W: ptgcn.com

This product is exclusively available under Proteintech Group brand and is not available to purchase from any other manufacturer.

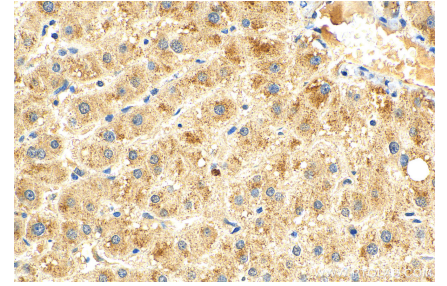
Selected Validation Data



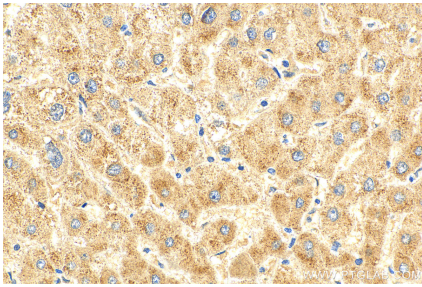
Various lysates were subjected to SDS PAGE followed by western blot with 27801-1-AP (SPG7 antibody) at dilution of 1:1000 incubated at room temperature for 1.5 hours.



IP result of anti-SPG7 (IP:27801-1-AP, 4ug; Detection:27801-1-AP 1:500) with HeLa cells lysate 2800 ug.



Immunohistochemical analysis of paraffin-embedded human liver tissue slide using 27801-1-AP (SPG7 antibody) at dilution of 1:200 (under 40x lens). Heat mediated antigen retrieval with Tris-EDTA buffer (pH 9.0).



Immunohistochemical analysis of paraffin-embedded human liver tissue slide using 27801-1-AP (SPG7 antibody) at dilution of 1:200 (under 40x lens). Heat mediated antigen retrieval with Tris-EDTA buffer (pH 9.0).