

# LRRC56 Polyclonal antibody

Catalog Number: 27796-1-AP

## Basic Information

<b>Catalog Number:</b> 27796-1-AP	<b>GenBank Accession Number:</b> BC035936	<b>Purification Method:</b> Antigen affinity purification
<b>Size:</b> 600 µg/ml	<b>GeneID (NCBI):</b> 115399	<b>Recommended Dilutions:</b> IHC 1:200-1:800
<b>Source:</b> Rabbit	<b>UNIPROT ID:</b> Q8LYG6	IF/ICC 1:50-1:500
<b>Isotype:</b> IgG	<b>Full Name:</b> Leucine rich repeat containing 56	
<b>Immunogen Catalog Number:</b> AG22018	<b>Calculated MW:</b> 542 aa, 59 kDa	

## Applications

<b>Tested Applications:</b> IHC, IF/ICC, ELISA	<b>Positive Controls:</b>
<b>Species Specificity:</b> human, mouse, rat	<b>IHC :</b> mouse brain tissue, rat testis tissue
	<b>IF/ICC :</b> U-251 cells,

**Note-IHC: suggested antigen retrieval with TE buffer pH 9.0; (\*) Alternatively, antigen retrieval may be performed with citrate buffer pH 6.0**

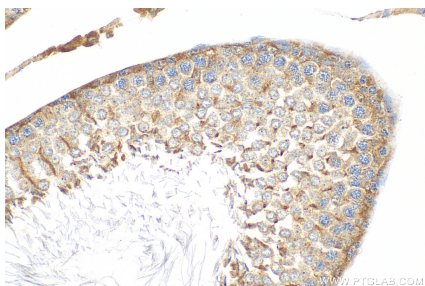
## Background Information

Leucine-rich repeat (LRR)-containing gene 56 (LRRC56) was recently reported to be a homolog of the Outer Dynein Arm 8 gene (oda8), a gene necessary for the cytoplasmic maturation of the outer dynein arms (ODA) in the flagella of algae. LRRC56 is recruited during axoneme construction in an IFT-dependent manner and is required for the addition of dynein arms to the distal segment of the flagellum. Human LRRC56 encodes a 542 amino acid protein determined from transcriptomic studies and immunohistochemistry to be expressed in many organs, mostly in testis and pituitary gland.

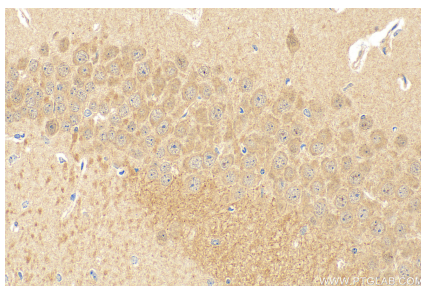
## Storage

**Storage:**  
Store at -20°C. Stable for one year after shipment.  
**Storage Buffer:**  
PBS with 0.02% sodium azide and 50% glycerol pH 7.3.  
**Aliquoting is unnecessary for -20°C storage**

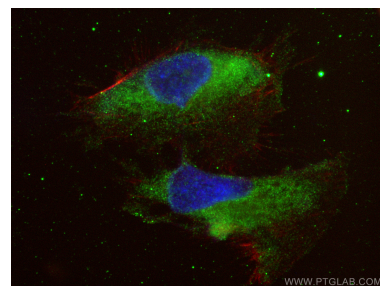
## Selected Validation Data



Immunohistochemical analysis of paraffin-embedded rat testis tissue slide using 27796-1-AP (LRRC56 antibody) at dilution of 1:400 (under 40x lens). Heat mediated antigen retrieval with Tris-EDTA buffer (pH 9.0).



Immunohistochemical analysis of paraffin-embedded mouse brain tissue slide using 27796-1-AP (LRRC56 antibody) at dilution of 1:400 (under 40x lens). Heat mediated antigen retrieval with Tris-EDTA buffer (pH 9.0).



Immunofluorescent analysis of (-20°C Ethanol) fixed U-251 cells using LRRC56 antibody (27796-1-AP) at dilution of 1:200 and CoraLite®488-Conjugated AffiniPure Goat Anti-Rabbit IgG(H+L) (SA00013-2), CL594-Phalloidin (red).