

For Research Use Only

# ETHE1 Polyclonal antibody

Catalog Number: 27786-1-AP

1 Publications



## Basic Information

Catalog Number:

27786-1-AP

Size:

260 µg/ml

Source:

Rabbit

Isotype:

IgG

Immunogen Catalog Number:

AG26597

GenBank Accession Number:

BC008250

GeneID (NCBI):

23474

UNIPROT ID:

O95571

Full Name:

ethylmalonic encephalopathy 1

Calculated MW:

28 kDa

Observed MW:

28 kDa

Purification Method:

Antigen affinity purification

Recommended Dilutions:

WB 1:500-1:2000

IHC 1:50-1:500

## Applications

Tested Applications:

IHC, WB, ELISA

Cited Applications:

WB, IHC

Species Specificity:

Human, mouse

Cited Species:

human

**Note-IHC: suggested antigen retrieval with TE buffer pH 9.0; (\*) Alternatively, antigen retrieval may be performed with citrate buffer pH 6.0**

Positive Controls:

WB : BGC-823 cells, HeLa cells, mouse liver tissue

IHC : human liver tissue, human colon cancer tissue

## Background Information

ETHE1, a gene encoding a b-lactamase-like, iron-coordinating metalloprotein, is mutated in ethylmalonic encephalopathy. In humans, ETHE1 gene is proved to encode the SDO in mitochondria and its mutations lead to a fatal autosomal recessive mitochondrial disease: ethylmalonic encephalopathy.

## Notable Publications

Author	Pubmed ID	Journal	Application
Yiwei Liu	38839744	Cell Death Dis	WB, IHC

## Storage

Storage:

Store at -20°C. Stable for one year after shipment.

Storage Buffer:

PBS with 0.02% sodium azide and 50% glycerol pH 7.3.

Aliquoting is unnecessary for -20°C storage

For technical support and original validation data for this product please contact:

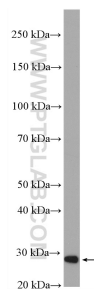
T: 4006900926

E: [Proteintech-CN@ptglab.com](mailto:Proteintech-CN@ptglab.com)

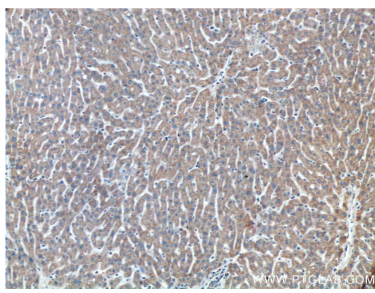
W: [ptgcn.com](http://ptgcn.com)

This product is exclusively available under Proteintech Group brand and is not available to purchase from any other manufacturer.

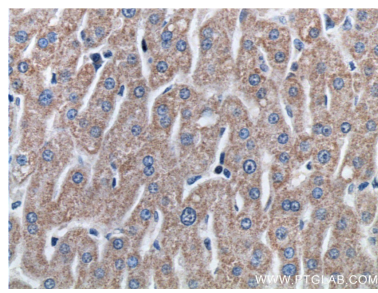
## Selected Validation Data



BGC-823 cells were subjected to SDS PAGE followed by western blot with 27786-1-AP (ETHE1 antibody) at dilution of 1:1000 incubated at room temperature for 1.5 hours.



Immunohistochemical analysis of paraffin-embedded human liver tissue slide using 27786-1-AP (ETHE1 antibody) at dilution of 1:200 (under 10x lens).



Immunohistochemical analysis of paraffin-embedded human liver tissue slide using 27786-1-AP (ETHE1 antibody) at dilution of 1:200 (under 40x lens).