

For Research Use Only

CSDA Polyclonal antibody

Catalog Number: 27785-1-AP

Featured Product

1 Publications



Basic Information

Catalog Number:

27785-1-AP

Concentration:

750 ug/ml

Source:

Rabbit

Isotype:

IgG

Immunogen Catalog Number:

AG26839

GenBank Accession Number:

BC008801

GeneID (NCBI):

8531

UNIPROT ID:

P16989

Full Name:

cold shock domain protein A

Calculated MW:

40 kDa

Observed MW:

60-68 kDa

Purification Method:

Antigen affinity purification

Recommended Dilutions:

WB 1:1000-1:4000

IHC 1:50-1:500

Applications

Tested Applications:

WB, IHC, ELISA

Cited Applications:

WB

Species Specificity:

human, mouse, rat

Cited Species:

mouse

Note-IHC: suggested antigen retrieval with TE buffer pH 9.0; (*) Alternatively, antigen retrieval may be performed with citrate buffer pH 6.0

Positive Controls:

WB : Y79 cells, KYSE-30 cells, mouse liver tissue, rat liver tissue

IHC : mouse heart tissue, mouse skeletal muscle tissue

Background Information

CSDA (Cold shock domain protein A), also known as DBPA (DNA-binding protein A), YBX3 (Y-box protein 3), is a DNA-binding protein that represses angiogenesis and lymphangiogenesis by directly binding to hypoxia response element (HRE) and serum response element (SRE). CSDA is ubiquitous expressed in human skeletal muscle, heart, and decidual cells, which is thought to be a multifunctional epithelial-specific protein involved in gene transcription, DNA repair, and interaction with other proteins (PMID: 33816248). CSDA is a nucleic-acid-binding protein that directly regulates gene expression by using different mechanisms, and acts as a translational repressor (e.g., MYH9 and SPTBN1) and positive regulator of mRNA stability (PMID: 31189097). Western blot analysis detected CSDA at a range of 50-70 kDa due to the anomalous mobility of Y-box proteins (PMID: 38255791).

Notable Publications

Author	Pubmed ID	Journal	Application
Lin-Yun Chen	39481849	Mol Metab	WB

Storage

Storage:

Store at -20°C. Stable for one year after shipment.

Storage Buffer:

PBS with 0.02% sodium azide and 50% glycerol

Aliquoting is unnecessary for -20°C storage

For technical support and original validation data for this product please contact:

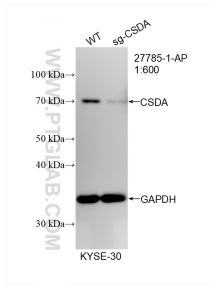
T: 4006900926

E: Proteintech-CN@ptglab.com

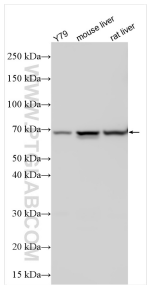
W: ptgcn.com

This product is exclusively available under Proteintech Group brand and is not available to purchase from any other manufacturer.

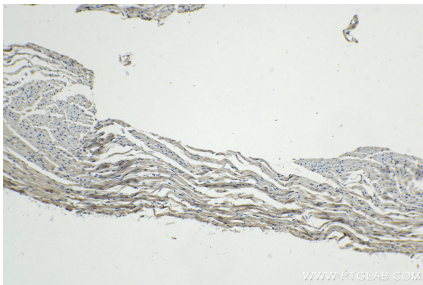
Selected Validation Data



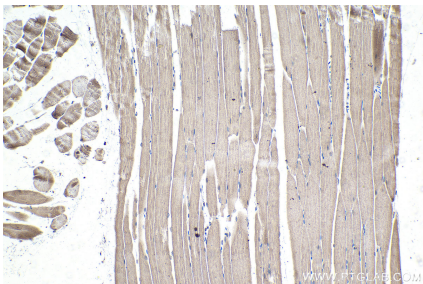
WB result of CSDA antibody (27785-1-AP; 1:1000; room temperature for 1.5 hours) with wild-type and CSDA knockout KYSE-30 cells.



Various lysates were subjected to SDS PAGE followed by western blot with 27785-1-AP (CSDA antibody) at dilution of 1:2000 incubated at room temperature for 1.5 hours.



Immunohistochemical analysis of paraffin-embedded mouse heart tissue slide using 27785-1-AP (CSDA antibody) at dilution of 1:200 (under 10x lens). Heat mediated antigen retrieval with Tris-EDTA buffer (pH 9.0).



Immunohistochemical analysis of paraffin-embedded mouse skeletal muscle tissue slide using 27785-1-AP (CSDA antibody) at dilution of 1:200 (under 10x lens). Heat mediated antigen retrieval with Tris-EDTA buffer (pH 9.0).