

For Research Use Only

GET4 Polyclonal antibody

Catalog Number: 27768-1-AP

2 Publications



Basic Information

Catalog Number:

27768-1-AP

Concentration:

450 ug/ml

Source:

Rabbit

Isotype:

IgG

Immunogen Catalog Number:

AG26904

GenBank Accession Number:

BC003550

GeneID (NCBI):

51608

UNIPROT ID:

Q7L5D6

Full Name:

chromosome 7 open reading frame 20

Calculated MW:

327 aa, 37 kDa

Observed MW:

33 kDa

Purification Method:

Antigen affinity purification

Recommended Dilutions:

WB: 1:1000-1:8000

IHC: 1:50-1:500

Applications

Tested Applications:

WB, IHC, ELISA

Cited Applications:

WB

Species Specificity:

human

Cited Species:

human, mouse

Note-IHC: suggested antigen retrieval with TE buffer pH 9.0; (*) Alternatively, antigen retrieval may be performed with citrate buffer pH 6.0

Positive Controls:

WB : HEK-293 cells, MCF-7 cells, HeLa cells

IHC : human colon tissue,

Background Information

Notable Publications

Author	Pubmed ID	Journal	Application
Fabio Lauria	32958857	Nat Cell Biol	WB
Julia Jülg	37317656	EMBO Rep	WB

Storage

Storage:

Store at -20°C. Stable for one year after shipment.

Storage Buffer:

PBS with 0.02% sodium azide and 50% glycerol, pH7.3

Aliquoting is unnecessary for -20°C storage

For technical support and original validation data for this product please contact:

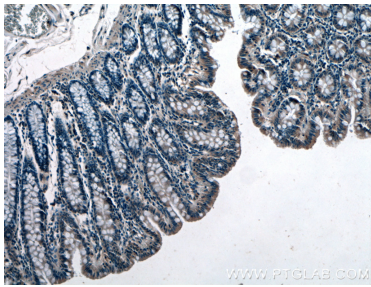
T: 4006900926

E: Proteintech-CN@ptglab.com

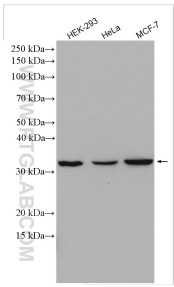
W: ptgcn.com

This product is exclusively available under Proteintech Group brand and is not available to purchase from any other manufacturer.

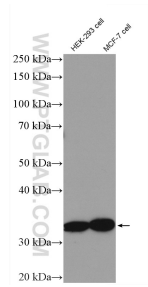
Selected Validation Data



Immunohistochemical analysis of paraffin-embedded human colon tissue slide using 27768-1-AP (GET4 antibody) at dilution of 1:200 (under 10x lens).



Various lysates were subjected to SDS PAGE followed by western blot with 27768-1-AP (GET4 antibody) at dilution of 1:4000 incubated at room temperature for 1.5 hours.



HEK-293 cells and MCF-7 cells were subjected to SDS PAGE followed by western blot with 27768-1-AP (GET4 antibody) at dilution of 1:2500 incubated at room temperature for 1.5 hours.