

PRPF31 Polyclonal antibody

Catalog Number: 27750-1-AP

Basic Information

Catalog Number:

27750-1-AP

Size:

800 µg/ml

Source:

Rabbit

Isotype:

IgG

Immunogen Catalog Number:

AG26716

GenBank Accession Number:

NM_015629

GeneID (NCBI):

26121

UNIPROT ID:

Q8WWY3

Full Name:

PRP31 pre-mRNA processing factor 31
homolog (S. cerevisiae)

Calculated MW:

55 kDa

Observed MW:

55 kDa

Purification Method:

Antigen affinity purification

Recommended Dilutions:

WB 1:2000-1:16000

IHC 1:50-1:500

IF-P 1:50-1:500

Applications

Tested Applications:

WB, IHC, IF-P, ELISA

Species Specificity:

human, mouse

**Note-IHC: suggested antigen retrieval with
TE buffer pH 9.0; (*) Alternatively, antigen
retrieval may be performed with citrate
buffer pH 6.0**

Positive Controls:

WB : A549 cells, Caco-2 cells, Hela cells, Jurkat cells

IHC : mouse eye tissue,

IF-P : mouse eye tissue,

Background Information

PRPF31 is a component of the spliceosome complex. It is recruited to introns following the attachment of U4 and U6 RNAs and the 15.5K protein. The addition of PRPF31 is crucial for the transition of the spliceosomal complex to the activated state.

Storage

Storage:

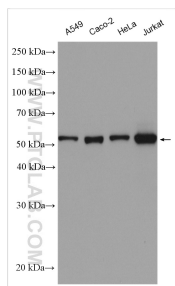
Store at -20°C. Stable for one year after shipment.

Storage Buffer:

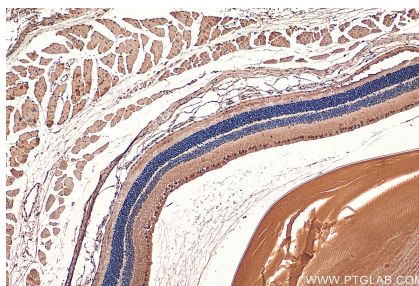
PBS with 0.02% sodium azide and 50% glycerol pH 7.3.

Aliquoting is unnecessary for -20°C storage

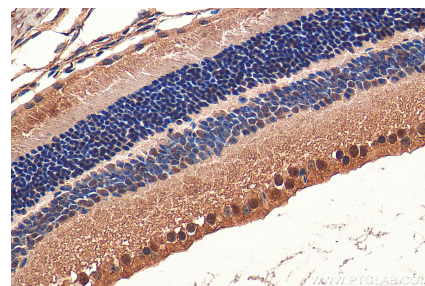
Selected Validation Data



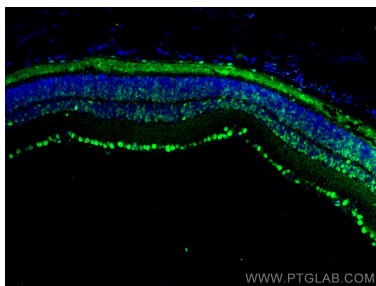
Various lysates were subjected to SDS PAGE followed by western blot with 27750-1-AP (PRPF31 antibody) at dilution of 1:8000 incubated at room temperature for 1.5 hours.



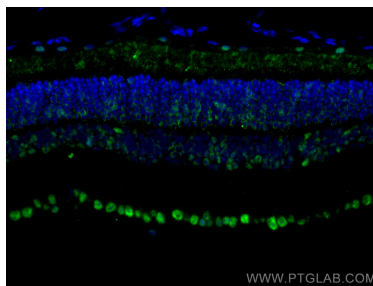
Immunohistochemical analysis of paraffin-embedded mouse eye tissue slide using 27750-1-AP (PRPF31 antibody) at dilution of 1:200 (under 10x lens). Heat mediated antigen retrieval with Tris-EDTA buffer (pH 9.0).



Immunohistochemical analysis of paraffin-embedded mouse eye tissue slide using 27750-1-AP (PRPF31 antibody) at dilution of 1:200 (under 40x lens). Heat mediated antigen retrieval with Tris-EDTA buffer (pH 9.0).



Immunofluorescent analysis of (4% PFA) fixed mouse eye tissue using PRPF31 antibody (27750-1-AP) at dilution of 1:200 and CoraLite®488-Conjugated AffiniPure Goat Anti-Rabbit IgG(H+L).



Immunofluorescent analysis of (4% PFA) fixed mouse eye tissue using PRPF31 antibody (27750-1-AP) at dilution of 1:200 and CoraLite®488-Conjugated AffiniPure Goat Anti-Rabbit IgG(H+L).