

For Research Use Only

SLC25A42 Polyclonal antibody

Catalog Number: 27720-1-AP



Basic Information

Catalog Number: 27720-1-AP	GenBank Accession Number: BC045598	Purification Method: Antigen affinity purification
Concentration: 400 ug/ml	GeneID (NCBI): 284439	Recommended Dilutions: WB: 1:1000-1:4000
Source: Rabbit	UNIPROT ID: Q86VD7	
Isotype: IgG	Full Name: solute carrier family 25, member 42	
Immunogen Catalog Number: AG26313	Calculated MW: 318 aa, 35 kDa	
	Observed MW: 30-35 kDa	

Applications

Tested Applications: WB, ELISA	Positive Controls: WB : Jurkat cells, mouse adipose tissue
Species Specificity: human, mouse	

Background Information

SLC25A42 is a member of the SLC25 family of mitochondrial solute carriers. It is involved in the transport of crucial metabolic intermediates across the inner mitochondrial membrane, facilitating energy production and cellular metabolism. The gene encoding SLC25A42 is located on the human chromosome and expresses a protein that acts as a transporter in the mitochondria, aiding in the efficient exchange of molecules between the cytoplasm and the mitochondrial matrix. This protein has a calculated molecular weight of 30-35 kDa. This transporter may play a role in various physiological processes, potentially influencing mitochondrial function and overall cellular health (PMID: 40246810).

Storage

Storage:
Store at -20°C. Stable for one year after shipment.
Storage Buffer:
PBS with 0.02% sodium azide and 50% glycerol, pH7.3
Aliquoting is unnecessary for -20°C storage

For technical support and original validation data for this product please contact:

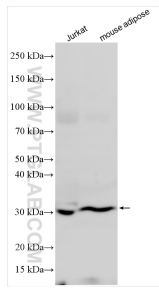
T: 4006900926

E: Proteintech-CN@ptglab.com

W: ptgcn.com

This product is exclusively available under Proteintech Group brand and is not available to purchase from any other manufacturer.

Selected Validation Data



Various lysates were subjected to SDS PAGE followed by western blot with 27720-1-AP (SLC25A42 antibody) at dilution of 1:2000 incubated at room temperature for 1.5 hours.