

# INSL5 Polyclonal antibody

Catalog Number: 27697-1-AP

## Basic Information

**Catalog Number:**

27697-1-AP

**Size:**

500 µg/ml

**Source:**

Rabbit

**Isotype:**

IgG

**Immunogen Catalog Number:**

AG26833

**GenBank Accession Number:**

BC101646

**GeneID (NCBI):**

10022

**UNIPROT ID:**

Q9Y5Q6

**Full Name:**

insulin-like 5

**Observed MW:**

12-15 kDa

**Purification Method:**

Antigen affinity purification

**Recommended Dilutions:**

WB 1:200-1:1000

## Applications

**Tested Applications:**

WB, ELISA

**Species Specificity:**

mouse, rat

**Positive Controls:**

WB : mouse testis tissue, rat testis

## Background Information

Insulin-like peptide 5 (INSL5), also named as UNQ156/PRO182, is a member of the relaxin/insulin superfamily and presents a tertiary structure similar to that of other insulin family members. It is located outside the cell membranes and highly expressed in rectum with lower levels in uterus and ascending and descending colon (PMID: 10458910). The calculated molecular weight of INSL5 is 15 kDa. A recent report suggested an important role for Insl5 in the regulation of insulin secretion and b-cell homeostasis. Other reports identified that colonic Insl5 expression is reduced by the gut microbiota and energy availability. In human diseases, INSL5 has been identified recently in colonic tissue and neuroendocrine tumors, but its specific functions in tumors remain to be elucidated (PMID: 32657028).

## Storage

**Storage:**

Store at -20°C. Stable for one year after shipment.

**Storage Buffer:**

PBS with 0.02% sodium azide and 50% glycerol pH 7.3.

Aliquoting is unnecessary for -20°C storage

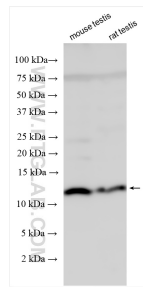
For technical support and original validation data for this product please contact:

T: 4006900926

E: [Proteintech-CN@ptglab.com](mailto:Proteintech-CN@ptglab.com)W: [ptgcn.com](http://ptgcn.com)

This product is exclusively available under Proteintech Group brand and is not available to purchase from any other manufacturer.

## Selected Validation Data



Various lysates were subjected to SDS PAGE followed by western blot with 27697-1-AP (INS5 antibody) at dilution of 1:400 incubated at room temperature for 1.5 hours.