

For Research Use Only

# REL Polyclonal antibody

Catalog Number: 27693-1-AP

2 Publications



## Basic Information

Catalog Number:

27693-1-AP

Size:

900 µg/ml

Source:

Rabbit

Isotype:

IgG

Immunogen Catalog Number:

AG26776

GenBank Accession Number:

NM\_001291746

GeneID (NCBI):

5966

UNIPROT ID:

Q04864

Full Name:

v-rel reticuloendotheliosis viral  
oncogene homolog (avian)

Calculated MW:

69 kDa

Observed MW:

68-78 kDa

Purification Method:

Antigen affinity purification

Recommended Dilutions:

WB 1:1000-1:4000

## Applications

Tested Applications:

WB, ELISA

Cited Applications:

WB

Species Specificity:

Human

Cited Species:

human, mouse

Positive Controls:

WB: Daudi cells,

## Background Information

REL, also known as, Proto-oncogene c-Rel, is a 619 amino acid protein, which may play a role in differentiation and lymphopoiesis. NF-kappa-B is a homo- or heterodimeric complex formed by the Rel-like domain-containing proteins RELA/p65, RELB, NFkB1/p105, NFkB1/p50, REL and NFkB2/p52. The NF-kappa-B heterodimer RELA/p65-c-Rel is a transcriptional activator.

## Notable Publications

Author	Pubmed ID	Journal	Application
Jing Du	39419123	Toxicol Appl Pharmacol	WB
Hongyu Wang	35116901	Transl Cancer Res	WB

## Storage

Storage:

Store at -20°C. Stable for one year after shipment.

Storage Buffer:

PBS with 0.02% sodium azide and 50% glycerol pH 7.3.

Aliquoting is unnecessary for -20°C storage

For technical support and original validation data for this product please contact:

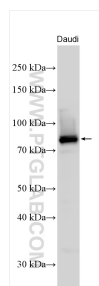
T: 4006900926

E: [Proteintech-CN@ptglab.com](mailto:Proteintech-CN@ptglab.com)

W: [ptgcn.com](http://ptgcn.com)

This product is exclusively available under Proteintech Group brand and is not available to purchase from any other manufacturer.

## Selected Validation Data



Various lysates were subjected to SDS PAGE followed by western blot with 27693-1-AP (REL antibody) at dilution of 1:2000 incubated at room temperature for 1.5 hours.