

For Research Use Only

# SASH1 Polyclonal antibody

Catalog Number: 27689-1-AP



## Basic Information

<b>Catalog Number:</b> 27689-1-AP	<b>GenBank Accession Number:</b> NM_015278	<b>Purification Method:</b> Antigen affinity purification
<b>Concentration:</b> 400 ug/ml	<b>GeneID (NCBI):</b> 23328	<b>Recommended Dilutions:</b> WB 1:500-1:2000
<b>Source:</b> Rabbit	<b>UNIPROT ID:</b> O94885	<b>IF/ICC 1:50-1:500</b>
<b>Isotype:</b> IgG	<b>Full Name:</b> SAM and SH3 domain containing 1	
<b>Immunogen Catalog Number:</b> AG26771	<b>Calculated MW:</b> 137 kDa	
	<b>Observed MW:</b> 170 kDa	

## Applications

<b>Tested Applications:</b> WB, IF/ICC, ELISA	<b>Positive Controls:</b>
<b>Species Specificity:</b> human	<b>WB :</b> SKOV-3 cells, U-251 cells, U-87 MG cells
	<b>IF/ICC :</b> U2OS cells,

## Background Information

SAM and SH3 domain-containing protein 1 (SASH1, also known as KIAA0790 and PEPE1) is a multidomain protein implicated in various cellular processes, including cell adhesion, migration, and apoptosis. It has been identified as a novel Eph receptor-binding partner through SAM-SAM domain interactions, which are critical for the recruitment and binding of downstream molecules in the Eph signaling pathway (PMID: 37619706). SASH1 is also known to regulate signaling through focal adhesion kinase (FAK) and AKT/PI3K and promote apoptosis. Mutations in SASH1 have been associated with cancers, and it is suggested as a potential therapeutic target in non-small cell lung cancer (PMID: 33122723).

## Storage

**Storage:**  
Store at -20°C. Stable for one year after shipment.  
**Storage Buffer:**  
PBS with 0.02% sodium azide and 50% glycerol pH 7.3.  
**Aliquoting is unnecessary for -20°C storage**

For technical support and original validation data for this product please contact:

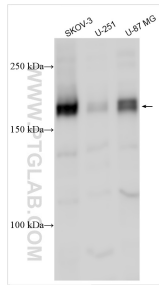
T: 4006900926

E: [Proteintech-CN@ptglab.com](mailto:Proteintech-CN@ptglab.com)

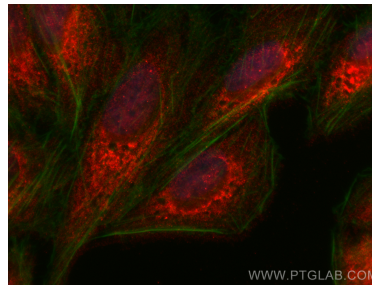
W: [ptgcn.com](http://ptgcn.com)

This product is exclusively available under Proteintech Group brand and is not available to purchase from any other manufacturer.

## Selected Validation Data



Various lysates were subjected to SDS PAGE followed by western blot with 27689-1-AP (SASH1 antibody) at dilution of 1:1000 incubated at room temperature for 1.5 hours.



Immunofluorescent analysis of (4% PFA) fixed U2OS cells using SASH1 antibody (27689-1-AP) at dilution of 1:200 and CoraLite®594-Conjugated Goat Anti-Rabbit IgG(H+L) (SA00013-4), CL488-Phalloidin (green).