

For Research Use Only

RCOR1 Polyclonal antibody

Catalog Number: 27686-1-AP **5 Publications**



Basic Information

Catalog Number: 27686-1-AP	GenBank Accession Number: NM_015156	Purification Method: Antigen affinity purification
Size: 500 µg/ml	GeneID (NCBI): 23186	Recommended Dilutions: WB 1:500-1:1000
Source: Rabbit	Full Name: REST corepressor 1	
Isotype: IgG	Calculated MW: 53 kDa	
Immunogen Catalog Number: AG26770	Observed MW: 60-65 kDa	

Applications

Tested Applications: WB, ELISA	Positive Controls: WB : C2C12 cell, PC-12 cells
Cited Applications: WB, IHC	
Species Specificity: Human, rat, mouse	
Cited Species: human, rat	

Background Information

RCOR1, also named as REST corepressor 1, is a 485 amino acid protein, which belongs to the CoREST family. RCOR1 is an essential component of the BHC complex, a corepressor complex that represses transcription of neuron-specific genes in non-neuronal cells. The BHC complex is recruited at RE1/NRSE sites by REST and acts by deacetylating and demethylating specific sites on histones, thereby acting as a chromatin modifier. The calculated molecular weight of RCOR1 is 53 kDa, but the phosphorylated RCOR1 is about 60-65 kDa.

Notable Publications

Author	Pubmed ID	Journal	Application
Buqing Ye	32449550	EMBO J	WB
Xu Xiao-Die	32423826	Biochem Biophys Res Commun	WB
Esmerina Tili	29661714	Ann Diagn Pathol	IHC

Storage

Storage:
Store at -20°C. Stable for one year after shipment.
Storage Buffer:
PBS with 0.02% sodium azide and 50% glycerol pH 7.3.
Aliquoting is unnecessary for -20°C storage

For technical support and original validation data for this product please contact:

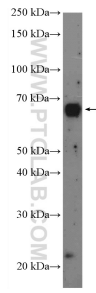
T: 4006900926

E: Proteintech-CN@ptglab.com

W: ptgcn.com

This product is exclusively available under Proteintech Group brand and is not available to purchase from any other manufacturer.

Selected Validation Data



C2C12 cell were subjected to SDS PAGE followed by western blot with 27686-1-AP (RCOR1 antibody) at dilution of 1:600 incubated at room temperature for 1.5 hours.