

SAP30 Polyclonal antibody

Catalog Number: 27679-1-AP

2 Publications

Basic Information

Catalog Number:

27679-1-AP

Size:

600 µg/ml

Source:

Rabbit

Isotype:

IgG

Immunogen Catalog Number:

AG26516

GenBank Accession Number:

BC016757

GeneID (NCBI):

8819

UNIPROT ID:

O75446

Full Name:

Sin3A-associated protein, 30kDa

Calculated MW:

220 aa, 23 kDa

Observed MW:

23-28 kDa

Purification Method:

Antigen affinity purification

Recommended Dilutions:

WB 1:500-1:2000

Applications

Tested Applications:

WB, ELISA

Cited Applications:

WB, IF

Species Specificity:

Human

Cited Species:

human

Positive Controls:

WB : A549 cells, HL-60 cells, K-562 cells

Background Information

SAP30, also named as Sin3 corepressor complex subunit SAP30, is a 220 amino acid protein, which is expressed in all tissues tested with highest levels in pancreas, ovary, PBL, spleen and thymus. SAP30 is involved in the functional recruitment of the Sin3-histone deacetylase complex (HDAC) to a specific subset of N-CoR corepressor complexes.

Notable Publications

Author	Pubmed ID	Journal	Application
Sandra Ruiz García	31558434	Development	IF
Kazuhiro Fukumura	38065098	Cell Rep	WB

Storage

Storage:

Store at -20°C. Stable for one year after shipment.

Storage Buffer:

PBS with 0.02% sodium azide and 50% glycerol pH 7.3.

Aliquoting is unnecessary for -20°C storage

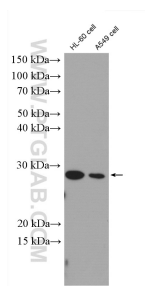
For technical support and original validation data for this product please contact:

T: 4006900926

E: Proteintech-CN@ptglab.comW: ptgcn.com

This product is exclusively available under Proteintech Group brand and is not available to purchase from any other manufacturer.

Selected Validation Data



A549 cells were subjected to SDS PAGE followed by western blot with 27679-1-AP (SAP30 antibody) at dilution of 1:1000 incubated at room temperature for 1.5 hours.