

For Research Use Only

EPG5 Polyclonal antibody, PBS Only

Catalog Number: 27666-1-PBS



Basic Information

Catalog Number:

27666-1-PBS

Source:

Rabbit

Isotype:

IgG

Immunogen Catalog Number:

AG24801

GenBank Accession Number:

BC130614

GeneID (NCBI):

57724

UNIPROT ID:

Q9HCEO

Full Name:

KIAA1632

Calculated MW:

2579 aa, 292 kDa

Observed MW:

270-290 kDa

Purification Method:

Antigen affinity purification

Applications

Tested Applications:

WB, IHC, Indirect ELISA

Species Specificity:

human, mouse

Background Information

EPG5, a metazoan-specific autophagy protein, regulates autophagy by promoting fusion of autophagosomes with lysosomes and/or late endosomes. EPG5 regulates the stability and the assembly of STX17-SNAP29-VAMP8 trans-SNARE complexes. Loss of function of EPG5 causes non-specific fusion of autophagosomes with other endocytic vesicles, resulting in formation of non-degradative enlarged vesicles. EPG5 expression in human pluripotent stem cells like ESC and iPSC is higher than that of human somatic cells. (PMID: 30931944, PMID: 27588602)

Storage

Storage:

Store at -80°C.

The product is shipped with ice packs. Upon receipt, store it immediately at -80°C

Storage Buffer:

PBS only, pH7.3

For technical support and original validation data for this product please contact:

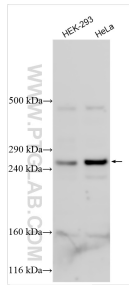
T: 4006900926

E: Proteintech-CN@ptglab.com

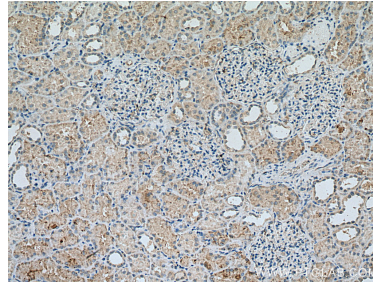
W: ptgcn.com

This product is exclusively available under Proteintech Group brand and is not available to purchase from any other manufacturer.

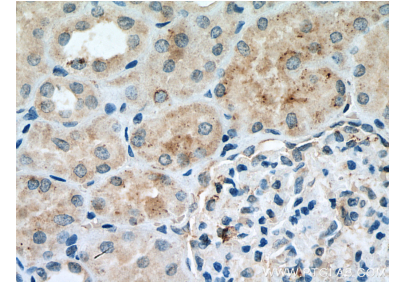
Selected Validation Data



Various lysates were subjected to Tris-Acetate gel system followed by western blot with 27666-1-AP (EPG5 antibody) at dilution of 1:600 incubated at room temperature for 1.5 hours. This data was developed using the same antibody clone with 27666-1-PBS in a different storage buffer formulation.



Immunohistochemical analysis of paraffin-embedded human kidney tissue slide using 27666-1-AP (KIAA1632 antibody) at dilution of 1:200 (under 10x lens). Heat mediated antigen retrieval with Sodium Citrate buffer (pH 6.0). This data was developed using the same antibody clone with 27666-1-PBS in a different storage buffer formulation.



Immunohistochemical analysis of paraffin-embedded human kidney tissue slide using 27666-1-AP (KIAA1632 antibody) at dilution of 1:200 (under 40x lens). Heat mediated antigen retrieval with Sodium Citrate buffer (pH 6.0). This data was developed using the same antibody clone with 27666-1-PBS in a different storage buffer formulation.



Immunohistochemical analysis of paraffin-embedded human lung cancer tissue slide using 27666-1-AP (EPG5 antibody) at dilution of 1:200 (under 40x lens). Heat mediated antigen retrieval with Tris-EDTA buffer (pH 9.0). This data was developed using the same antibody clone with 27666-1-PBS in a different storage buffer formulation.