

For Research Use Only

EPG5 Polyclonal antibody

Catalog Number: 27666-1-AP



Basic Information

Catalog Number: 27666-1-AP	GenBank Accession Number: BC130614	Purification Method: Antigen affinity purification
Size: 400 µg/ml	GeneID (NCBI): 57724	Recommended Dilutions: WB 1:500-1:1000 IHC 1:50-1:500
Source: Rabbit	UNIPROT ID: Q9HCEO	
Isotype: IgG	Full Name: KIAA1632	
Immunogen Catalog Number: AG24801	Calculated MW: 2579 aa, 292 kDa	
	Observed MW: 270-290 kDa	

Applications

Tested Applications:

IHC, WB, ELISA

Species Specificity:

Human, mouse

Note-IHC: suggested antigen retrieval with TE buffer pH 9.0; (*) Alternatively, antigen retrieval may be performed with citrate buffer pH 6.0

Positive Controls:

WB : HEK-293 cells, HeLa cells

IHC : human kidney tissue,

Background Information

EPG5, a metazoan-specific autophagy protein, regulates autophagy by promoting fusion of autophagosomes with lysosomes and/or late endosomes. EPG5 regulates the stability and the assembly of STX17-SNAP29-VAMP8 trans-SNARE complexes. Loss of function of EPG5 causes non-specific fusion of autophagosomes with other endocytic vesicles, resulting in formation of non-degradative enlarged vesicles. EPG5 expression in human pluripotent stem cells like ESC and iPSC is higher than that of human somatic cells. (PMID: 30931944, PMID: 27588602)

Storage

Storage:

Store at -20°C. Stable for one year after shipment.

Storage Buffer:

PBS with 0.02% sodium azide and 50% glycerol pH 7.3.

Aliquoting is unnecessary for -20°C storage

For technical support and original validation data for this product please contact:

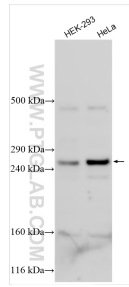
T: 4006900926

E: Proteintech-CN@ptglab.com

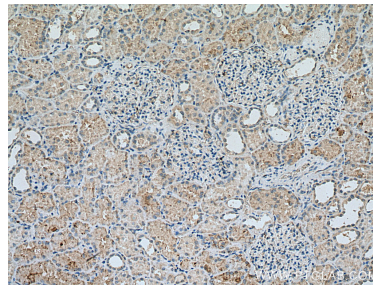
W: ptgcn.com

This product is exclusively available under Proteintech Group brand and is not available to purchase from any other manufacturer.

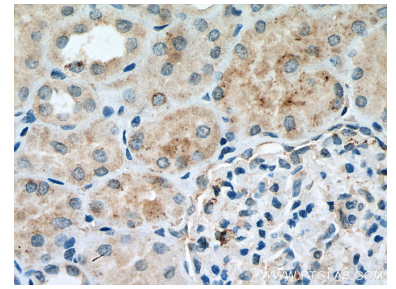
Selected Validation Data



Various lysates were subjected to SDS PAGE followed by western blot with 27666-1-AP (EPG5 antibody) at dilution of 1:600 incubated at room temperature for 1.5 hours.



Immunohistochemical analysis of paraffin-embedded human kidney tissue slide using 27666-1-AP (KIAA1632 antibody) at dilution of 1:200 (under 10x lens). Heat mediated antigen retrieved with Sodium Citrate buffer (pH 6.0).



Immunohistochemical analysis of paraffin-embedded human kidney tissue slide using 27666-1-AP (KIAA1632 antibody) at dilution of 1:200 (under 40x lens). Heat mediated antigen retrieved with Sodium Citrate buffer (pH 6.0).