

## Neutrophil Elastase Polyclonal antibody

Catalog Number: 27642-1-AP

7 Publications

## Basic Information

## Catalog Number:

27642-1-AP

## Size:

800 ug/ml

## Source:

Rabbit

## Isotype:

IgG

## Immunogen Catalog Number:

AG26634

## GenBank Accession Number:

BC074816

## GeneID (NCBI):

1991

## UNIPROT ID:

P08246

## Full Name:

elastase 2, neutrophil

## Calculated MW:

267 aa, 29 kDa

## Observed MW:

29 kDa

## Purification Method:

Antigen affinity purification

## Recommended Dilutions:

WB 1:500-1:1000

IHC 1:50-1:500

IF/ICC 1:200-1:800

## Applications

## Tested Applications:

WB, IHC, IF/ICC, ELISA

## Cited Applications:

WB, IHC, IF

## Species Specificity:

human, mouse

## Cited Species:

human, mouse, rat, bovine

**Note-IHC: suggested antigen retrieval with TE buffer pH 9.0; (\*) Alternatively, antigen retrieval may be performed with citrate buffer pH 6.0**

## Positive Controls:

WB : THP-1 cells, U-937 cells

IHC : human lymphoma tissue, mouse spleen tissue

IF/ICC : HEK-293 cells,

## Background Information

ELA2(Neutrophil elastase) is also named as ELAL, NE, HLE, HNE, PMN-E, SERP1, GE, ELANE and belongs to the peptidase S1 family. It is a 33-kDa enzyme with several isoforms that differ in their extent of glycosylation(PMID:12223222). Human neutrophil elastase (HNE) is a serine protease with potent proteolytic activity (3), which is reported to cause mucin secretion (degranulation)(PMID:12169572). It may contribute to the directed migration of leukocytes into flamed postcapillary venules in addition to contributing to the process of tissue emigration(PMID:9683424). The full length protein has a signal peptide, propeptide and three glycosylation sites.

## Notable Publications

Author	Pubmed ID	Journal	Application
Guanxin Lv	35565616	Animals (Basel)	IF
Jin Li	35305560	Cell Mol Biol Lett	WB,IHC
Hao-Dong Pan	39374547	Eur J Cardiothorac Surg	IF

## Storage

## Storage:

Store at -20°C. Stable for one year after shipment.

## Storage Buffer:

PBS with 0.02% sodium azide and 50% glycerol pH 7.3.

Aliquoting is unnecessary for -20°C storage

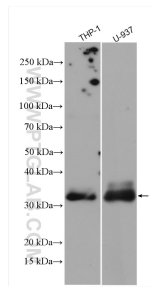
For technical support and original validation data for this product please contact:

T: 4006900926

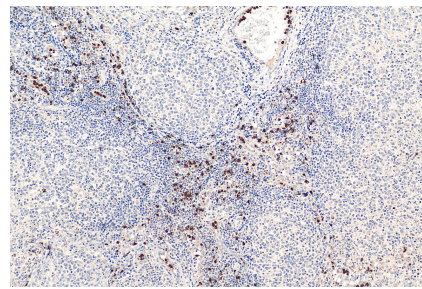
E: [Proteintech-CN@ptglab.com](mailto:Proteintech-CN@ptglab.com)W: [ptgcn.com](http://ptgcn.com)

**This product is exclusively available under Proteintech Group brand and is not available to purchase from any other manufacturer.**

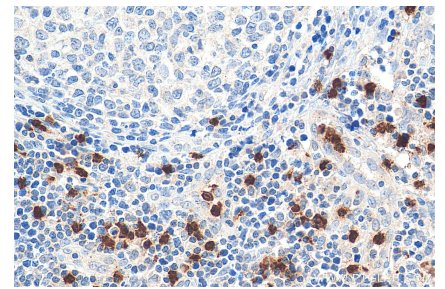
## Selected Validation Data



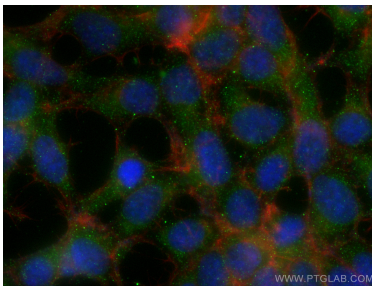
THP-1 cells were subjected to SDS PAGE followed by western blot with 27642-1-AP (ELA2 antibody) at dilution of 1:800 incubated at room temperature for 1.5 hours.



Immunohistochemical analysis of paraffin-embedded human lymphoma tissue slide using 27642-1-AP (ELA2 antibody) at dilution of 1:200 (under 10x lens). Heat mediated antigen retrieval with Tris-EDTA buffer (pH 9.0).



Immunohistochemical analysis of paraffin-embedded human lymphoma tissue slide using 27642-1-AP (ELA2 antibody) at dilution of 1:200 (under 40x lens). Heat mediated antigen retrieval with Tris-EDTA buffer (pH 9.0).



Immunofluorescent analysis of (-20°C Ethanol) fixed HEK-293 cells using ELA2 antibody (27642-1-AP) at dilution of 1:400 and CoraLite®488-Conjugated AffiniPure Goat Anti-Rabbit IgG(H+L), CL594-Phalloidin (red).