

For Research Use Only

# KDEL<sup>R</sup>3 Polyclonal antibody

Catalog Number: 27632-1-AP

3 Publications



## Basic Information

Catalog Number:

27632-1-AP

Concentration:

350 µg/ml

Source:

Rabbit

Isotype:

IgG

Immunogen Catalog Number:

AG26496

GenBank Accession Number:

BC001277

GeneID (NCBI):

11015

UNIPROT ID:

O43731

Full Name:

KDEL (Lys-Asp-Glu-Leu) endoplasmic reticulum protein retention receptor 3

Calculated MW:

214 aa, 25 kDa

Observed MW:

28 kDa

Purification Method:

Antigen affinity purification

Recommended Dilutions:

WB 1:500-1:2000

## Applications

Tested Applications:

WB, ELISA

Cited Applications:

WB

Species Specificity:

human, mouse

Cited Species:

human, zebrafish

Positive Controls:

WB : NIH/3T3 cells,

## Background Information

### Notable Publications

Author	Pubmed ID	Journal	Application
Nunziata Maio	30765471	Haematologica	WB
Zezhong Mou	33424916	Front Genet	WB
Jian Yuan	39112444	Nat Commun	WB

## Storage

Storage:

Store at -20°C. Stable for one year after shipment.

Storage Buffer:

PBS with 0.02% sodium azide and 50% glycerol pH 7.3.

Aliquoting is unnecessary for -20°C storage

For technical support and original validation data for this product please contact:

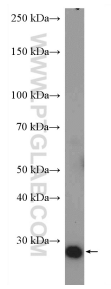
T: 4006900926

E: [Proteintech-CN@ptglab.com](mailto:Proteintech-CN@ptglab.com)

W: [ptgcn.com](http://ptgcn.com)

This product is exclusively available under Proteintech Group brand and is not available to purchase from any other manufacturer.

## Selected Validation Data



NIH/3T3 cells were subjected to SDS PAGE followed by western blot with 27632-1-AP (KDEL3 antibody) at dilution of 1:1000 incubated at room temperature for 1.5 hours.