

For Research Use Only

LRRFIP2 Polyclonal antibody, PBS Only

Catalog Number: 27614-1-PBS



Basic Information

Catalog Number:

27614-1-PBS

Source:

Rabbit

Isotype:

IgG

Immunogen Catalog Number:

AG26355

GenBank Accession Number:

BC053668

GeneID (NCBI):

9209

UNIPROT ID:

Q9Y608

Full Name:

leucine rich repeat (in FLII)
interacting protein 2

Calculated MW:

400 aa, 45 kDa

Observed MW:

52 kDa

Purification Method:

Antigen affinity purification

Applications

Tested Applications:

WB, Indirect ELISA

Species Specificity:

human, mouse, rat

Background Information

LRRFIP2 (Leucine-rich repeat flightless-interacting protein 2) is a cytoplasmic protein that regulates innate immune signaling by modulating nucleic acid-sensing pathways. It interacts with flightless-I homolog and plays roles in inflammation and antiviral responses.

Storage

Storage:

Store at -80°C.

The product is shipped with ice packs. Upon receipt, store it immediately at -80°C

Storage Buffer:

PBS only, pH7.3

For technical support and original validation data for this product please contact:

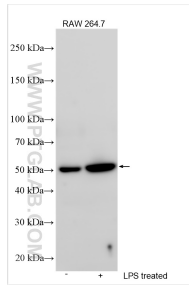
T: 4006900926

E: Proteintech-CN@ptglab.com

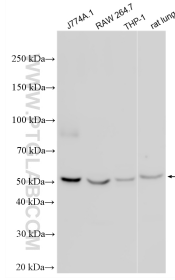
W: ptgcn.com

This product is exclusively available under Proteintech Group brand and is not available to purchase from any other manufacturer.

Selected Validation Data



Various lysates were subjected to SDS PAGE followed by western blot with 27614-1-AP (LRRFIP2 antibody) at dilution of 1:1500 incubated at room temperature for 1.5 hours. This data was developed using the same antibody clone with 27614-1-PBS in a different storage buffer formulation.



J774A.1 cells were subjected to SDS PAGE followed by western blot with 27614-1-AP (LRRFIP2 antibody) at dilution of 1:2000 incubated at room temperature for 1.5 hours. This data was developed using the same antibody clone with 27614-1-PBS in a different storage buffer formulation.