

For Research Use Only

LRRFIP2 Polyclonal antibody

Catalog Number: 27614-1-AP



Basic Information

Catalog Number:

27614-1-AP

Source:

Rabbit

Isotype:

IgG

Immunogen Catalog Number:

AG26355

GenBank Accession Number:

BC053668

GeneID (NCBI):

9209

UNIPROT ID:

Q9Y608

Full Name:

leucine rich repeat (in FLII)
interacting protein 2

Calculated MW:

400 aa, 45 kDa

Observed MW:

52 kDa

Purification Method:

Antigen affinity purification

Recommended Dilutions:

WB: 1:500-1:3000

Applications

Tested Applications:

WB, ELISA

Species Specificity:

human, mouse, rat

Positive Controls:

WB : LPS treated RAW 264.7 cells, J774A.1 cells, RAW 264.7 cells, THP-1 cells, rat lung tissue

Background Information

LRRFIP2 (Leucine-rich repeat flightless-interacting protein 2) is a cytoplasmic protein that regulates innate immune signaling by modulating nucleic acid-sensing pathways. It interacts with flightless-I homolog and plays roles in inflammation and antiviral responses .

Storage

Storage:

Store at -20°C. Stable for one year after shipment.

Storage Buffer:

PBS with 0.02% sodium azide and 50% glycerol, pH7.3

Aliquoting is unnecessary for -20°C storage

For technical support and original validation data for this product please contact:

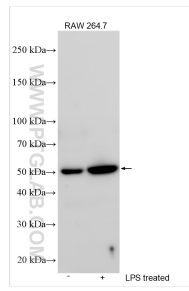
T: 4006900926

E: Proteintech-CN@ptglab.com

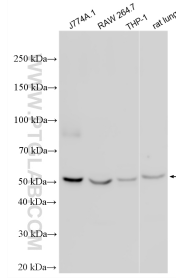
W: ptgcn.com

This product is exclusively available under Proteintech Group brand and is not available to purchase from any other manufacturer.

Selected Validation Data



Various lysates were subjected to SDS PAGE followed by western blot with 27614-1-AP (LRRFIP2 antibody) at dilution of 1:1500 incubated at room temperature for 1.5 hours.



J774A.1 cells were subjected to SDS PAGE followed by western blot with 27614-1-AP (LRRFIP2 antibody) at dilution of 1:2000 incubated at room temperature for 1.5 hours.